

2017



TOOLHOLDERS AND COLLETS
TAKIM TUTUCULAR VE PENSLER

 **gürkan**



53 years of experience...
53 yıllık deneyim...



TOOLHOLDERS & COLLETS
TAKIM TUTUCULAR & PENSLELER

CONTENTS
İÇİNDEKİLER



TOOLHOLDERS
TAKIM TUTUCULAR

3-30



COLLETS
PENSLER

31-74



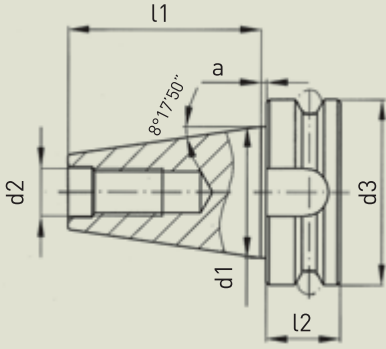
TOOLHOLDERS ACCESSORIES
TAKIM TUTUCU AKSESUARLARI

75-84



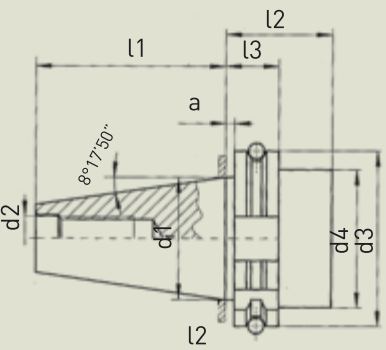
TOOLHOLDERS
TAKIM TUTUCULAR

TOOLHOLDERS TAPER STANDARDS TAKIM TUTUCU KONİK STANDARTLARI



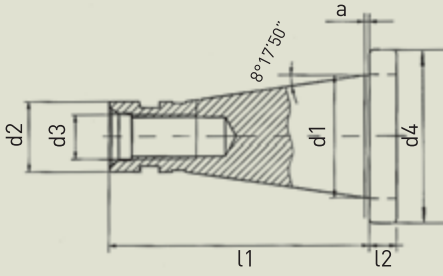
MAS 403 BT (JIS B 6339)

TAPER	a +/- 0.2	d1	d2	d3	l2	l1 +/- 0.2
BT30	2	31.75	M12	46	20	48.4
BT40	2	44.45	M16	63	25	65.4
BT50	3	69.85	M24	100	35	101.8



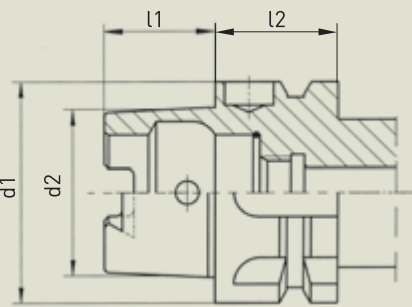
DIN 69871 A (ISO 7388-1)

TAPER	a +/- 0.1	d1	d2	d3 0/- 0.1	d4 max.	l2 min.	l3 0/- 0.1	l1 0/- 0.3
DIN 30	3.2	31.75	M12	50.0	44	35	19.1	47.8
DIN 40	3.2	44.45	M16	63.55	50	35	19.1	68.4
DIN 50	3.2	69.85	M24	97.5	80	35	19.1	101.75



DIN 2080 (ISO)

TAPER	a +/- 0.2	d1	d2 a10	d3	d4 0/-0.4	l2 +/- 0.15	l1
ISO 30	1.6	31.75	17.4	M12	50	8	68.4
ISO 40	1.6	44.45	25.3	M16	63	10	93.4
ISO 50	3.2	69.85	39.6	M24	97.5	12	126.8



HSK DIN69893-1 A (ISO 12164-1)

TAPER	d1	d2	l1	l2
HSK 50	50	38	25	26
HSK 63	63	48	32	26
HSK 80	80	60	40	26

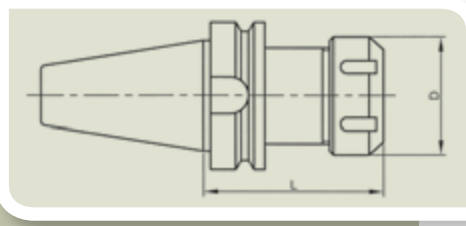
Tapers are according to AT3 specifications
On the collet chucks the run out between outside taper to the taper of collet cavity is max. 5µ.
Tutuculardaki konik hassasiyeti AT3 standardındadır.
Pens tutucularındaki pens yuvası ile dış konik arası salgı max. 5µ.



JIS B 6339 (MAS 403 BT)

TOOLHOLDERS
TAKIM TUTUCULARI

ER COLLET CHUCKS ER PENS BAŞLIKLARI



JIS B 6339 (MAS403 BT) - AD&B - Balanced G6.3

CODE / KOD BT 30	L	D	collet type and Ø clamping range pens tipi ve Ø sıkma aralığı	EURO
BT30 ER16	60	28	ER16 Ø1-10mm	29.00
BT30 ER25	60	42	ER25 Ø2-16mm	29.00
BT30 ER32	60	50	ER32 Ø3-20mm	31.00
BT30 ER40	70	63	ER40 Ø4-26mm	35.00

CODE / KOD BT 40	L	D	collet type and Ø clamping range pens tipi ve Ø sıkma aralığı	EURO
BT40 ER16	60	28	ER16 Ø1-10mm	25.00
BT40 ER16 100	100	28	ER16 Ø1-10mm	31.00
BT40 ER16 130M	130	22	ER16 Ø1-10mm	38.00
BT40 ER16 160	160	28	ER16 Ø1-10mm	49.00
BT40 ER20	70	34	ER20 Ø2-13mm	25.00
BT40 ER20 100	100	34	ER20 Ø2-13mm	31.00
BT40 ER25	70	42	ER25 Ø2-16mm	25.00
BT40 ER25 100	100	42	ER25 Ø2-16mm	31.00
BT40 ER25 160	160	42	ER25 Ø2-16mm	50.00
BT40 ER32	70	50	ER32 Ø3-20mm	25.00
BT40 ER32 100	100	50	ER32 Ø3-20mm	31.00
BT40 ER32 160	160	50	ER32 Ø3-20mm	52.00
BT40 ER40	70	63	ER40 Ø4-26mm	26.50
BT40 ER40 100	100	63	ER40 Ø4-26mm	32.00
BT40 ER40 160	160	63	ER40 Ø4-26mm	54.00

CODE / KOD BT 50	L	D	collet type and Ø clamping range pens tipi ve Ø sıkma aralığı	EURO
BT50 ER25	100	42	ER25 Ø2-16mm	50.00
BT50 ER25 160	160	42	ER25 Ø2-16mm	78.00
BT50 ER32	100	50	ER32 Ø3-20mm	50.00
BT50 ER32 160	160	50	ER32 Ø3-20mm	78.00
BT50 ER40	100	63	ER40 Ø4-26mm	52.00
BT50 ER40 160	160	63	ER40 Ø4-26mm	78.00
BT50 ER50	100	78	ER50 Ø12-34mm	78.00

FACE MILL ADAPTORS

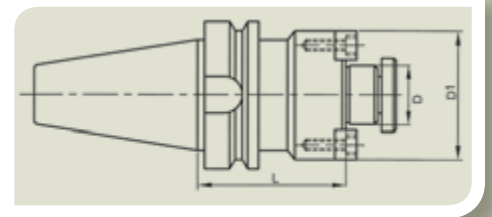
ALINDAN SIKMALI FREZE TUTUCULAR

JIS B 6339 (MAS403 BT) - AD&B - Balanced G6.3

CODE / KOD BT 30	D	D1	L	EURO
BT30 FM16	16	38	40	30.00
BT30 FM22	22	48	40	30.00
BT30 FM27	27	58	40	30.00



CODE / KOD BT 40	D	D1	L	EURO
BT40 FM16	16	38	40	27.00
BT40 FM16 100	16	38	100	35.00
BT40 FM22	22	48	45	27.00
BT40 FM22 100	22	48	100	35.00
BT40 CM22 *	22	40	55	30.00
BT40 FM27	27	58	45	28.00
BT40 FM27 100	27	58	100	36.00
BT40 CM27 *	27	48	55	31.00
BT40 FM32	32	78	50	29.00
BT40 FM32 100	32	78	100	38.00
BT40 CM32 *	32	58	60	32.00
BT40 FM40	40	88	55	30.00



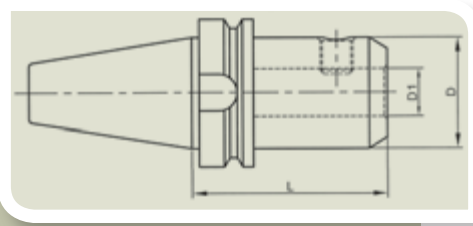
CODE / KOD BT 50	D	D1	L	EURO
BT50 FM16	16	38	55	50.00
BT50 FM22	22	48	55	50.00
BT50 FM27	27	58	55	52.00
BT50 FM32	32	78	55	52.00
BT50 FM40	40	88	55	54.00

* CM are Combi Type shell mill holders suitable for vertical and horizontal keyway tools.

* CM Kombine tip freze tutucusudur, enine ve boyuna kamalı takımları tutmaya uygundur.

WELDON ADAPTORS WELDON TUTUCULAR

JIS B 6339 (MAS403 BT) - AD&B - Balanced G6.3



CODE / KOD BT 30	D1	D	L	EURO
BT30 W06	6	25	50	27.00
BT30 W08	8	28	50	30.00
BT30 W10	10	35	50	27.00
BT30 W12	12	42	50	27.00
BT30 W16	16	48	63	27.00
BT30 W20	20	52	63	27.00

CODE / KOD BT 40	D1	D	L	EURO
BT40 W06	6	25	50	25.00
BT40 W06 100	6	25	100	30.00
BT40 W08	8	28	50	28.00
BT40 W08 100	8	28	100	33.00
BT40 W10	10	35	63	24.00
BT40 W10 100	10	35	100	29.00
BT40 W12	12	42	63	24.00
BT40 W12 100	12	42	100	29.00
BT40 W14	14	44	63	28.00
BT40 W16	16	48	63	24.00
BT40 W16 100	16	48	100	29.00
BT40 W18	18	50	63	29.00
BT40 W20	20	52	63	24.00
BT40 W20 100	20	52	100	29.00
BT40 W25	25	65	90	27.00
BT40 W32	32	72	100	32.00
BT40 W40	40	80	120	38.00

CODE / KOD BT 50	D1	D	L	EURO
BT50 W06	6	25	63	52.00
BT50 W08	8	28	63	54.00
BT50 W10	10	35	63	48.00
BT50 W12	12	42	80	48.00
BT50 W14	14	44	80	54.00
BT50 W16	16	48	80	48.00
BT50 W18	18	50	80	54.00
BT50 W20	20	52	80	48.00
BT50 W25	25	65	100	50.00
BT50 W32	32	72	105	52.00
BT50 W40	40	80	120	58.00

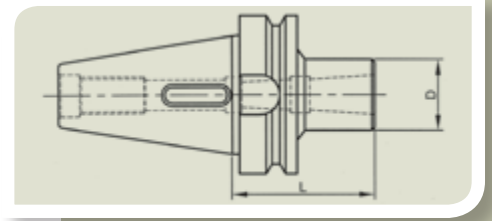
MORSE TAPER ADAPTORS

MORS KONİK TUTUCUSU

JIS B 6339 (MAS403 BT) - Balanced G6.3

CODE / KOD BT 40	MT	D	L	EURO
BT40 MT1	1	25	50	26.00
BT40 MT2	2	32	50	26.00
BT40 MT2 DB *	2	32	50	28.00
BT40 MT3	3	40	70	28.00
BT40 MT3 DB *	3	40	70	30.00
BT40 MT4	4	48	95	30.00
BT40 MT4 DB *	4	48	95	32.00

CODE / KOD BT 50	MT	D	L	EURO
BT50 MT1	1	25	45	52.00
BT50 MT2	2	32	60	49.00
BT50 MT3	3	40	65	50.00
BT50 MT4	4	48	95	52.00
BT50 MT5	5	63	105	55.00



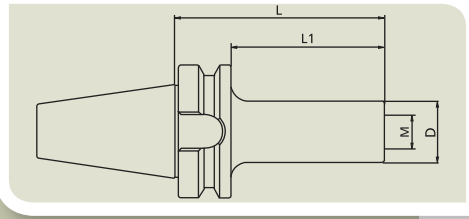
* DB type are drawbar type for holding morse taper shank with screwed end, all others are for tang type morse taper shanks.

* DB tipi çekirme vidalı mors konik saplar içindir, tüm diğerleri çakmalı tip mors konik saplar içindir.

TOOLHOLDER FOR SCREW IN TYPE CUTTERS VİDALI TİP TAKIM TUTUCUSU

JIS B 6339 (MAS403 BT) - AD&B - Balanced G6.3

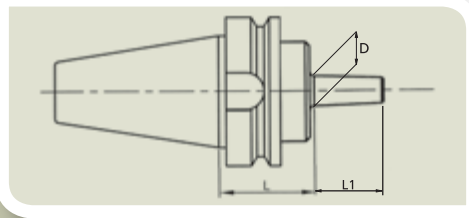
CODE / KOD BT 40	M	D	L	L1	EURO
BT40 M12-75	M12	21	75	48	34.00
BT40 M12-100	M12	21	100	73	37.00
BT40 M12-130	M12	21	130	103	40.00
BT40 M16-75	M16	29	75	48	34.00
BT40 M16-100	M16	29	100	73	37.00
BT40 M16-130	M16	29	130	103	40.00



DRILL CHUCK ADAPTORS MANDREN TUTUCUSU

JIS B 6339 (MAS403 BT)

CODE / KOD BT 40	D	L	L1	EURO
BT40 B12	B12	25	18.5	25.00
BT40 B16	B16	25	24	25.00
BT40 B18	B18	32	32	25.00

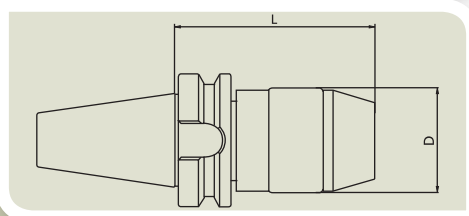


CODE / KOD BT 50	D	L	L1	EURO
BT50 B16	B16	32	24	49.00
BT50 B18	B18	32	32	49.00

DRILL CHUCK HOLDER MANDRENLİ TUTUCU

JIS B 6339 (MAS403 BT)

CODE / KOD BT 40	Clamping Range	D	L	EURO
BT40 DC13	1-13mm	48	100	80.00
BT40 DC16	3-16mm	53	110	84.00

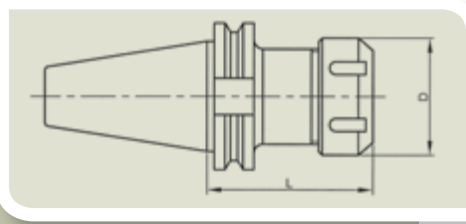




DIN 69871 (ISO 7388-1)

TOOLHOLDERS
TAKIM TUTUCULARI

COLLET CHUCKS PENS BAŞLIKLARI



DIN 69871 (ISO7388-1) - AD&B - Balanced G6.3

CODE / KOD DIN 30	L	D	collet type and Ø clamping range pens tipi ve Ø sıkma aralığı	EURO
DIN30 ER16	60	28	ER16 Ø1-10mm	29.00
DIN30 ER25	60	42	ER25 Ø2-16mm	29.00
DIN30 ER32	60	50	ER32 Ø3-20mm	31.00
DIN30 ER40	70	63	ER40 Ø4-26mm	35.00

CODE / KOD DIN 40	L	D	collet type and Ø clamping range pens tipi ve Ø sıkma aralığı	EURO
DIN40 ER16	60	28	ER16 Ø1-10mm	25.00
DIN40 ER16 100	100	28	ER16 Ø1-10mm	31.00
DIN40 ER16 130M	130	22	ER16 Ø1-10mm	38.00
DIN40 ER16 160	160	28	ER16 Ø1-10mm	49.00
DIN40 ER20	70	34	ER20 Ø2-13mm	25.00
DIN40 ER20 100	100	34	ER20 Ø2-13mm	31.00
DIN40 ER25	70	42	ER25 Ø2-16mm	25.00
DIN40 ER25 100	100	42	ER25 Ø2-16mm	31.00
DIN40 ER25 160	160	42	ER25 Ø2-16mm	50.00
DIN40 ER32	70	50	ER32 Ø3-20mm	25.00
DIN40 ER32 100	100	50	ER32 Ø3-20mm	31.00
DIN40 ER32 160	160	50	ER32 Ø3-20mm	52.00
DIN40 ER40	70	63	ER40 Ø4-26mm	26.50
DIN40 ER40 100	100	63	ER40 Ø4-26mm	32.00
DIN40 ER40 160	160	63	ER40 Ø4-26mm	54.00

CODE / KOD DIN 50	L	D	collet type and Ø clamping range pens tipi ve Ø sıkma aralığı	EURO
DIN50 ER25	100	42	ER25 Ø2-16mm	50.00
DIN50 ER25 160	160	42	ER25 Ø2-16mm	78.00
DIN50 ER32	100	50	ER32 Ø3-20mm	50.00
DIN50 ER32 160	160	50	ER32 Ø3-20mm	78.00
DIN50 ER40	100	63	ER40 Ø4-26mm	52.00
DIN50 ER40 160	160	63	ER40 Ø4-26mm	78.00
DIN50 ER50	100	78	ER50 Ø12-34mm	78.00

FACE MILL ADAPTORS

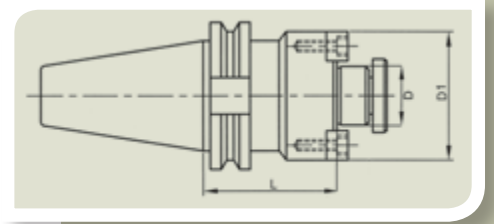
ALINDAN SIKMALI FREZE TUTUCULAR

DIN 69871 (ISO7388-1) - AD&B - Balanced G6.3

CODE / KOD DIN 30	D	D1	L	EURO
DIN30 FM16	16	38	40	30.00
DIN30 FM22	22	48	40	30.00
DIN30 FM27	27	58	40	30.00

CODE / KOD DIN 40	D	D1	L	EURO
DIN40 FM16	16	38	35	27.00
DIN40 FM16 100	16	38	100	35.00
DIN40 FM22	22	48	35	27.00
DIN40 FM22 100	22	48	100	35.00
DIN40 CM22 *	22	40	55	30.00
DIN40 FM27	27	58	40	28.00
DIN40 FM27 100	27	58	100	36.00
DIN40 CM27 *	27	48	55	31.00
DIN40 FM32	32	78	50	29.00
DIN40 FM32 100	32	78	100	38.00
DIN40 CM32 *	32	58	60	32.00
DIN40 FM40	40	88	50	30.00

CODE / KOD DIN 50	D	D1	L	EURO
DIN50 FM16	16	38	35	50.00
DIN50 FM22	22	48	35	50.00
DIN50 FM27	27	58	40	52.00
DIN50 FM32	32	78	50	52.00
DIN50 FM40	40	88	50	54.00



* CM are Combi Type shell mill holders suitable for vertical and horizontal keyway tools.
* CM Kombine tip freze tutucusudur, enine ve boyuna kamalı takımları tutmaya uygundur.

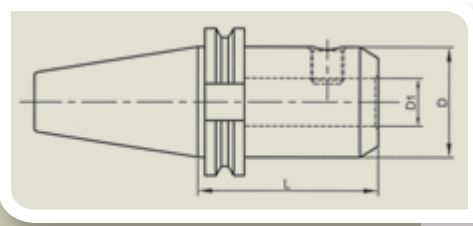
WELDON ADAPTORS WELDON TUTUCULAR

DIN 69871 (ISO7388-1) - AD&B - Balanced G6.3

CODE / KOD DIN 30	D1	D	L	EURO
DIN30 W06	6	25	50	27.00
DIN30 W08	8	28	50	30.00
DIN30 W10	10	35	50	27.00
DIN30 W12	12	42	50	27.00
DIN30 W16	16	48	63	27.00
DIN30 W20	20	52	63	27.00

CODE / KOD DIN 40	D1	D	L	EURO
DIN40 W06	6	25	50	25.00
DIN40 W06 100	6	25	100	30.00
DIN40 W08	8	28	50	28.00
DIN40 W08 100	8	28	100	33.00
DIN40 W10	10	35	50	24.00
DIN40 W10 100	10	35	100	29.00
DIN40 W12	12	42	50	24.00
DIN40 W12 100	12	42	100	29.00
DIN40 W14	14	44	50	28.00
DIN40 W16	16	48	63	24.00
DIN40 W16 100	16	48	100	29.00
DIN40 W18	18	50	63	29.00
DIN40 W20	20	52	63	24.00
DIN40 W20 100	20	52	100	29.00
DIN40 W25	25	65	100	27.00
DIN40 W32	32	72	100	32.00
DIN40 W40	40	80	120	38.00

CODE / KOD DIN 50	D1	D	L	EURO
DIN50 W06	6	25	63	52.00
DIN50 W08	8	28	63	54.00
DIN50 W10	10	35	63	48.00
DIN50 W12	12	42	63	48.00
DIN50 W14	14	44	63	54.00
DIN50 W16	16	48	63	48.00
DIN50 W18	18	50	63	54.00
DIN50 W20	20	52	63	48.00
DIN50 W25	25	65	80	50.00
DIN50 W32	32	72	100	52.00
DIN50 W40	40	80	120	58.00



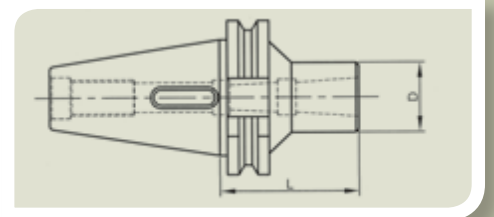
MORSE TAPER ADAPTORS

MORS KONİK TUTUCUSU

DIN 69871 (ISO7388-1) - Balanced G6.3

CODE / KOD DIN 40	MT	D	L	EURO
DIN40 MT1	1	25	50	26.00
DIN40 MT2	2	32	50	26.00
DIN40 MT2 DB *	2	32	50	28.00
DIN40 MT3	3	40	70	28.00
DIN40 MT3 DB *	3	40	70	30.00
DIN40 MT4	4	48	95	30.00
DIN40 MT4 DB *	4	48	95	32.00

CODE / KOD DIN 50	MT	D	L	EURO
DIN50 MT1	1	25	45	52.00
DIN50 MT2	2	32	60	49.00
DIN50 MT3	3	40	65	50.00
DIN50 MT4	4	48	95	52.00
DIN50 MT5	5	63	105	55.00



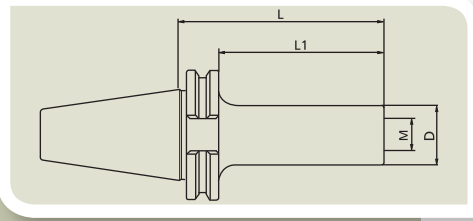
* DB type are drawbar type for holding morse taper shank with screwed end, all others are for tang type morse taper shanks.

* DB tipi çekirme vidalı mors konik saplar içindir, tüm diğerleri çakmalı tip mors konik saplar içindir.

TOOLHOLDER FOR SCREW IN TYPE CUTTERS VİDALI TİP TAKIM TUTUCUSU

DIN 69871 (ISO7388-1) - AD&B - Balanced G6.3

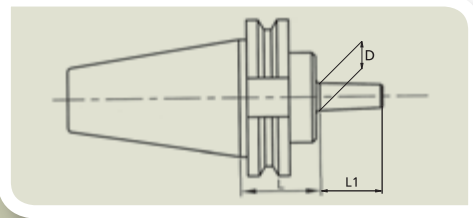
CODE / KOD DIN 40	M	D	L	L1	EURO
DIN40 M12-75	M12	21	75	56	34.00
DIN40 M12-100	M12	21	100	81	37.00
DIN40 M12-130	M12	21	130	111	40.00
DIN40 M16-75	M16	29	75	56	34.00
DIN40 M16-100	M16	29	100	81	37.00
DIN40 M16-130	M16	29	130	111	40.00



DRILL CHUCK ADAPTORS MANDREN TUTUCUSU

DIN 69871 (ISO7388-1)

CODE / KOD DIN 40	D	L	L1	EURO
DIN40 B12	B12	25	18.5	25.00
DIN40 B16	B16	25	24	25.00
DIN40 B18	B18	35	32	25.00

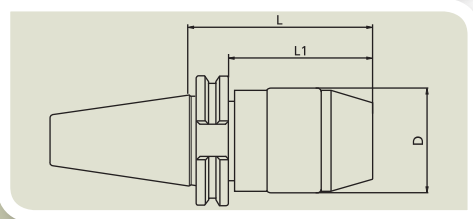


CODE / KOD DIN 50	D	L	L1	EURO
DIN50 B16	B16	25	24	49.00
DIN50 B18	B18	35	32	49.00

DRILL CHUCK HOLDER MANDRENLİ TUTUCU

JIS B 6339 (MAS403 BT)

CODE / KOD DIN 40	Clamping Range	D	L	EURO
DIN40 DC13	1-13mm	48	100	80.00
DIN40 DC16	3-16mm	53	110	84.00





DIN 2080 ISO

TOOLHOLDERS
TAKIM TUTUCULARI

COLLET CHUCKS PENS BAŞLIKLARI

DIN 2080 ISO

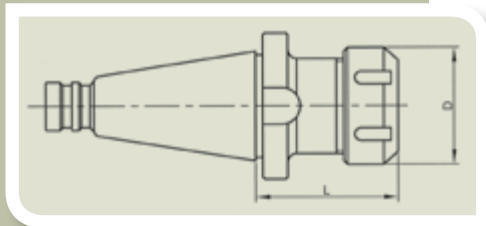
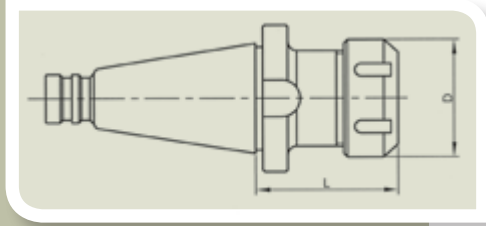
CODE / KOD ISO 30	L	D	collet type and Ø clamping range pens tipi ve Ø sıkma aralığı	EURO
ISO30 ER16	50	28	ER16 Ø1-10mm	29.00
ISO30 ER25	50	42	ER25 Ø2-16mm	29.00
ISO30 ER32	50	50	ER32 Ø3-20mm	31.00
ISO30 ER40	60	63	ER40 Ø4-26mm	35.00

CODE / KOD ISO 40	L	D	collet type and Ø clamping range pens tipi ve Ø sıkma aralığı	EURO
ISO40 ER16	50	28	ER16 Ø1-10mm	25.00
ISO40 ER25	60	42	ER25 Ø2-16mm	25.00
ISO40 ER32	60	50	ER32 Ø3-20mm	25.00
ISO40 ER40	60	63	ER40 Ø4-26mm	26.50

CODE / KOD ISO 50	L	D	collet type and Ø clamping range pens tipi ve Ø sıkma aralığı	EURO
ISO50 ER32	70	50	ER32 Ø3-20mm	50.00
ISO50 ER40	70	63	ER40 Ø4-26mm	52.00
ISO50 ER50	90	78	ER50 Ø12-34mm	78.00

ISO40 DIN6388-25 Collet Chuck - ISO40 DIN6388-25 Pens Başlığı

CODE / KOD ISO 40	L	D	collet type and Ø clamping range pens tipi ve Ø sıkma aralığı	EURO
ISO40 OZ25	70	60	OZ25 Ø2-25mm	28.00



FACE MILL ADAPTORS

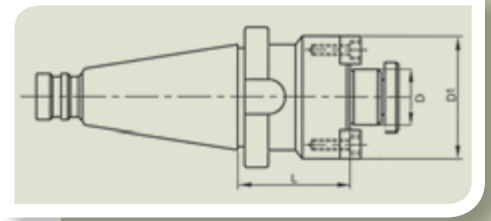
ALINDAN SIKMALI FREZE TUTUCULAR

DIN 2080 ISO

CODE / KOD ISO 30	D	D1	L	EURO
ISO30 FM16	16	38	30	30.00
ISO30 FM22	22	48	30	30.00
ISO30 FM27	27	58	30	30.00



CODE / KOD ISO 40	D	D1	L	EURO
ISO40 FM16	16	38	30	27.00
ISO40 FM22	22	48	30	27.00
ISO40 FM27	27	58	30	28.00
ISO40 FM32	32	78	30	29.00
ISO40 FM40	40	88	30	30.00



CODE / KOD ISO 50	D	D1	L	EURO
ISO50 FM16	16	38	30	50.00
ISO50 FM22	22	48	35	50.00
ISO50 FM27	27	58	35	52.00
ISO50 FM32	32	78	40	52.00
ISO50 FM40	40	88	40	54.00

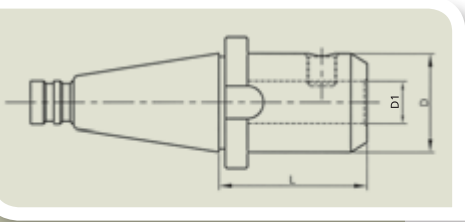
WELDON ADAPTORS WELDON TUTUCULAR

DIN 2080 ISO

CODE / KOD ISO 30	D1	D	L	EURO
ISO30 W10	10	35	40	27.00
ISO30 W12	12	42	40	27.00
ISO30 W16	16	48	50	27.00
ISO30 W20	20	52	63	27.00

CODE / KOD ISO 40	D1	D	L	EURO
ISO40 W06	6	25	50	25.00
ISO40 W08	8	28	50	28.00
ISO40 W10	10	35	50	24.00
ISO40 W12	12	42	50	24.00
ISO40 W16	16	48	63	24.00
ISO40 W20	20	52	63	24.00
ISO40 W25	25	65	80	27.00
ISO40 W32	32	72	80	32.00
ISO40 W40	40	80	90	38.00

CODE / KOD ISO 50	D1	D	L	EURO
ISO50 W10	10	35	63	48.00
ISO50 W12	12	42	63	48.00
ISO50 W16	16	48	63	48.00
ISO50 W20	20	52	63	48.00
ISO50 W25	25	65	80	50.00
ISO50 W32	32	72	80	52.00
ISO50 W40	40	80	90	58.00



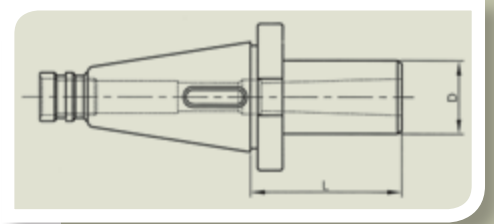
MORSE TAPER ADAPTORS MORS KONİK TUTUCUSU

DIN 2080 ISO

CODE / KOD ISO 40	MT	D	L	EURO
ISO40 MT1	1	25	50	26.00
ISO40 MT2	2	32	50	26.00
ISO40 MT3	3	40	65	28.00
ISO40 MT4	4	48	95	30.00



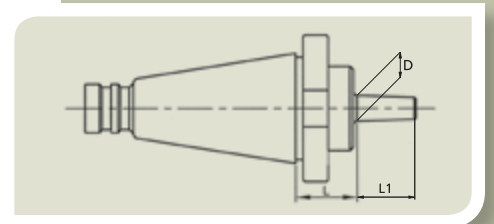
CODE / KOD ISO 50	MT	D	L	EURO
ISO50 MT2	2	32	60	49.00
ISO50 MT3	3	40	65	50.00
ISO50 MT4	4	48	70	52.00
ISO50 MT5	5	63	105	55.00



DRILL CHUCK ADAPTORS MANDREN TUTUCUSU

DIN 2080 ISO

CODE / KOD ISO 40	D	L	L1	EURO
ISO40 B12	B12	15	18.5	25.00
ISO40 B16	B16	17	24	25.00
ISO40 B18	B18	17	32	25.00







**HSK DIN69893 / ISO 12164
MORSE TAPER DIN228
TOOLHOLDERS**

*HSK DIN69893 / ISO 12164
MORS KONİK DIN228
TAKIM TUTUCULAR*

HSK A COLLET HOLDERS DIN69893 / ISO 12164 FORM A

HSK A PENS BAŞLIKLARI DIN69893 / ISO 12164 FORM A

HSK A - Balanced G2.5

CODE / KOD HSK50A	L	D	collet type and Ø clamping range pens tipi ve Ø sıkma aralığı	EURO
HSK50A ER16	100	28	ER16 Ø1-10mm	66.00
HSK50A ER25	100	42	ER25 Ø2-16mm	66.00
HSK50A ER32	100	50	ER32 Ø3-20mm	66.00

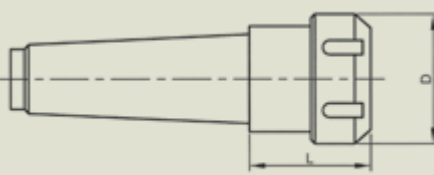
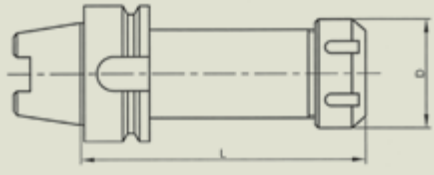
CODE / KOD HSK63A	L	D	collet type and Ø clamping range pens tipi ve Ø sıkma aralığı	EURO
HSK63A ER16	100	28	ER16 Ø1-10mm	66.00
HSK63A ER25	100	42	ER25 Ø2-16mm	66.00
HSK63A ER32	100	50	ER32 Ø3-20mm	66.00
HSK63A ER40	100	63	ER40 Ø4-26mm	66.00

DIN228 MORSE TAPER SHANK COLLET CHUCKS

DIN228 MORS KONİK SAPLI PENS BAŞLIKLARI

MT DIN228

CODE / KOD MT	L	D	collet type and Ø clamping range pens tipi ve Ø sıkma aralığı	EURO
MT2 ER20	50	34	ER20 Ø2-13mm	29.00
MT2 ER25	55	42	ER25 Ø2-16mm	29.00
MT2 ER32	70	50	ER32 Ø3-20mm	29.00
MT3 ER25	55	42	ER25 Ø2-16mm	29.00
MT3 ER32	70	50	ER32 Ø3-20mm	29.00
MT3 ER40	75	63	ER40 Ø4-26mm	29.00
MT4 ER32	70	50	ER32 Ø3-20mm	31.00
MT4 ER40	75	63	ER40 Ø4-26mm	31.00

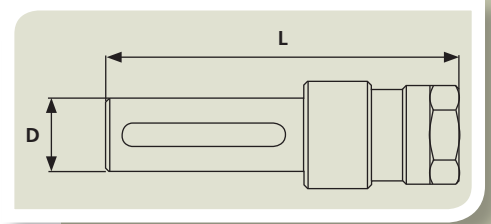


STRAIGHT SHANK TAPPING CHUCK SİLİNDİRİK SAPLI KILAVUZ ADAPTÖRÜ

TAPPING CHUCK / KILAVUZ ADAPTÖRÜ

CODE / KOD	L	D	collet type and Ø clamping range pens tipi ve Ø sıkma aralığı	tapping range kılavuz çekme aralığı	EURO
KT16 ER16	115	16	ER16 Ø1-10mm	M2 - M12	42.00
KT20 ER20	120	20	ER20 Ø2-13mm	M3 - M16	42.00
KT25 ER25	130	25	ER25 Ø2-16mm	M3 - M20	44.00

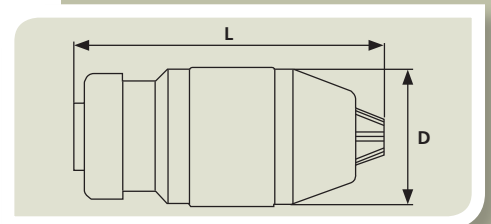
Suitable for ERT and ERTC tapping collets. They can also be used with standard ER collets
ERT ve ERTC kılavuz penslerine uygundur. Normal ER penslerle de kullanılabilir



SELF CENTERING DRILL CHUCK ELLE SIKMA MATKAP MANDRENİ

DRILL CHUCK / MATKAP MANDRENİ

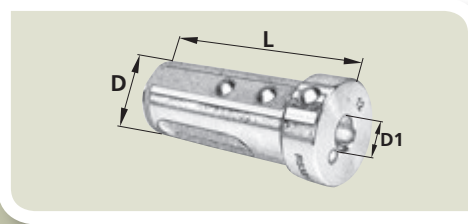
CODE / KOD	L	D	clamping range sıkma aralığı	inner rear taper arka konik	EURO
DC13B16	105	48	Ø1-13mm	B16	21.00
DC16B18	110	53	Ø1-16mm	B18	24.00



REDUCTION SLEEVES FOR CNC TURNING MACHINES CNC TORNALAR İÇİN REDÜKSİYON KOVANLAR

REDUCTION SLEEVE / REDÜKSİYON KOVAN

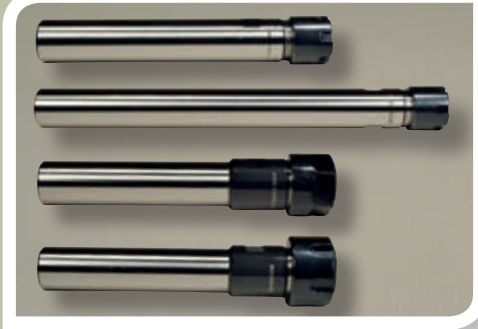
CODE / KOD	D	D1	L	FORM	EURO
RS2508	25	8	63	FORM 1	14.00
RS2510	25	10	63	FORM 1	14.00
RS2512	25	12	63	FORM 2	14.00
RS2516	25	16	63	FORM 2	14.00
RS2520	25	20	63	FORM 2	14.00
RS3208	32	8	89	FORM 1	15.00
RS3210	32	10	89	FORM 1	15.00
RS3212	32	12	89	FORM 1	15.00
RS3216	32	16	89	FORM 1	15.00
RS3220	32	20	89	FORM 2	15.00
RS3225	32	25	89	FORM 2	15.00
RS4008	40	8	100	FORM 1	16.50
RS4010	40	10	100	FORM 1	16.50
RS4012	40	12	100	FORM 1	16.50
RS4016	40	16	100	FORM 1	16.50
RS4020	40	20	100	FORM 1	16.50
RS4025	40	25	100	FORM 2	16.50
RS4032	40	32	100	FORM 2	16.50





STAIHT SHANK COLLET CHUCKS
SİLİNDİRİK SAPLI PENS TUTUCULARI

STRAIGHT SHANK ER COLLET HOLDERS SİLİNDİRİK SAPLI ER PENS TUTUCULARI



Straight shank collet holders have through hole for internal coolant and stop screw inside.

Silindirik saplı pens tutucuları içten soğutma için boydan boya deliktir ayrıca dayama vidası vardır.

ER8

CODE / KOD	D	D1	L	collet type and Ø clamping range pens tipi ve Ø sıkma aralığı	EURO
ER0808085M	8	12	85	ER8 Ø1-5mm	23.00
ER0810095M	10	12	95	ER8 Ø1-5mm	23.00
ER0812095M	12	12	95	ER8 Ø1-5mm	23.00

ER11

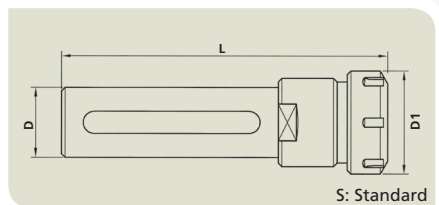
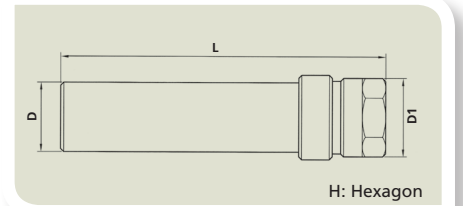
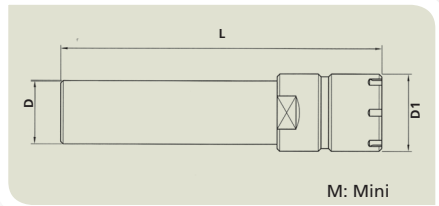
ER1112100M	12	16	100	ER11 Ø1-7mm	22.00
ER1116115M	16	16	115	ER11 Ø1-7mm	22.00
ER1116165M	16	16	165	ER11 Ø1-7mm	32.00
ER1116115H	16	19	115	ER11 Ø1-7mm	22.00

ER16

ER1620130M	20	22	130	ER16 Ø1-10mm	22.00
ER1620200M	20	22	200	ER16 Ø1-10mm	33.00
ER1620130H	20	28	130	ER16 Ø1-10mm	22.00
ER1620130S	20	32	130	ER16 Ø1-10mm	22.00

ER20

ER2020140M	20	28	140	ER20 Ø2-13mm	23.00
ER2020140H	20	34	140	ER20 Ø2-13mm	23.00
ER2020140S	20	35	140	ER20 Ø2-13mm	23.00
ER2025110H	25	34	110	ER20 Ø2-13mm	23.00
ER2025110S	25	35	110	ER20 Ø2-13mm	23.00
ER2025200M	25	28	200	ER20 Ø2-13mm	34.00



Suffix on the codes specifies the type of locknut
M: with ER Mini locknut
H: with ER Hexagon locknut
S: with ER Standart locknut

Kodun sonundaki harf somun tipini belirtir.
M: ER Mini somunlu
H: ER Altıköşe somunlu
S: ER Standart somunlu

STRAIGHT SHANK ER COLLET HOLDERS SİLİNDİRİK SAPLI ER PENS TUTUCULARI

ER25

CODE / KOD	D	D1	L	collet type and Ø clamping range pens tipi ve Ø sıkma aralığı	EURO
ER2520145M	20	35	145	ER25 Ø2-16mm	24.00
ER2525145M	25	35	145	ER25 Ø2-16mm	24.00
ER2525200M	25	35	200	ER25 Ø2-16mm	34.00
ER25254200M	25.4 (1"inch)	35	200	ER25 Ø2-16mm	34.00
ER2532110S	32	42	110	ER25 Ø2-16mm	24.00



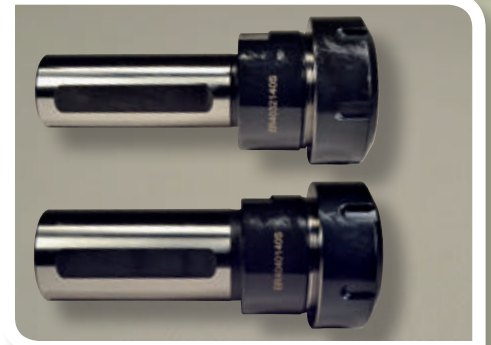
ER32

ER3225110S	25	50	110	ER32 Ø3-20mm	25.00
ER3232110S	32	50	110	ER32 Ø3-20mm	25.00
ER3240110S	40	50	110	ER32 Ø3-20mm	26.00



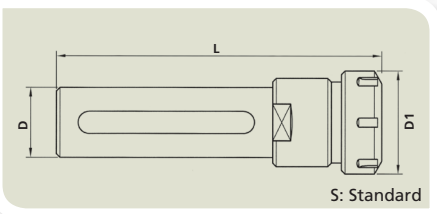
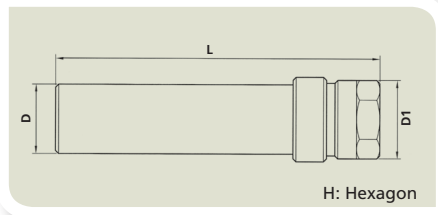
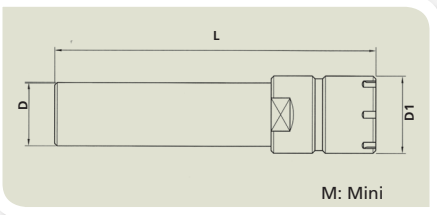
ER40

ER4032140S	32	63	140	ER40 Ø4-26mm	32.00
ER4040140S	40	63	140	ER40 Ø4-26mm	32.00



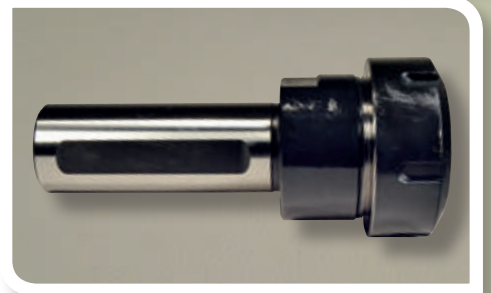
ER50

ER5040165S	40	78	165	ER50 Ø6-40mm	88.00
------------	----	----	-----	--------------	-------



Suffix on the codes specifies the type of locknut
M: with ER Mini locknut
H: with ER Hexagon locknut
S: with ER Standart locknut

Kodun sonundaki harf somun tipini belirtir.
M: ER Mini somunlu
H: ER Altıköşe somunlu
S: ER Standart somunlu



Straight shank collet holders have through hole for internal coolant and stop screw inside.

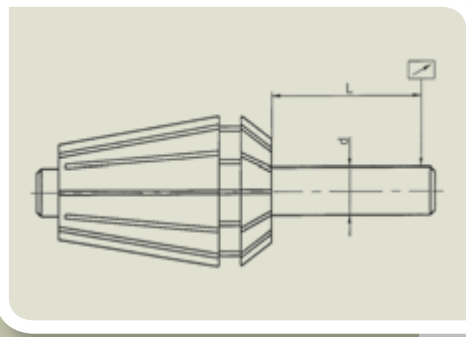
Silindirik saplı pens tutucuları içten soğutma için boydan boya deliktir ayrıca dayama vidası vardır.


PRECISION STANDARDS HASSASİYET STANDARTLARI



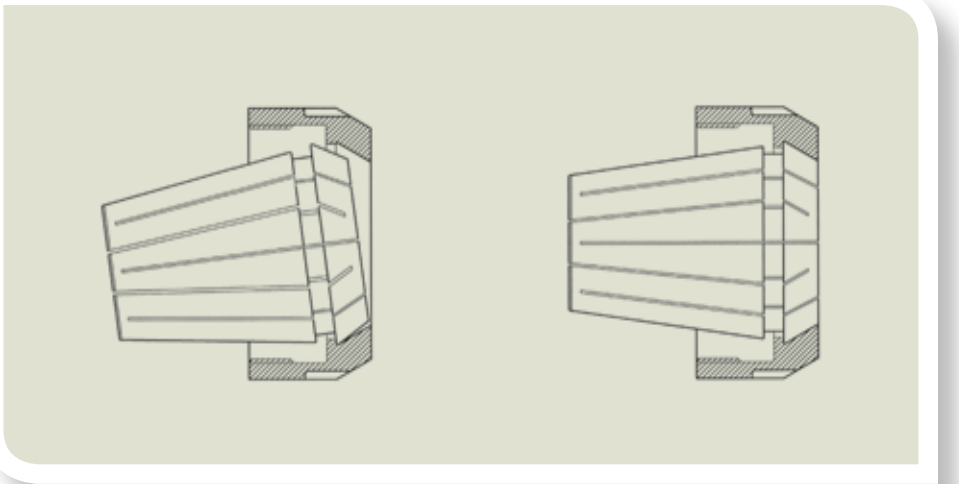
3 different precision levels
3 ayrı hassasiyet sınıfı:

CLASS 2	Precise and economic, according to DIN6499 Class 2 max 15-20 micron run out. <i>Hassas ve ekonomik, DIN 6499 Class 2 standardında max.15-20 mikron salgı.</i>
CLASS 1	Upper precision level according to DIN 6499 Class 1 max. 10 micron run out. <i>Daha Hassas, DIN 6499 Class 1 standardında max.10 mikron salgı.</i>
TOPAC	TOP level ACcuracy with max. run out to 5micron, suitable for very high precision , tight tolerance , high speed applications. <i>Süper Hassas, max 5 mikron salgı. Çok hassas takımlar, dar toleranslı işler, yüksek hızlı işlemeye uygun.</i>



Ø d	L	DIN 6499 CLASS 2	DIN 6499 CLASS 1	
1 - 1.6	6	0.015	0.010	0.005
1.6 - 3	10	0.015	0.010	0.005
3 - 7	16	0.015	0.010	0.005
7 - 10	25	0.015	0.010	0.005
10 - 18	40	0.020	0.010	0.005
18 - 25	50	0.020	0.010	0.005
25 - 34	60	0.020	0.015	0.010

COLLET MOUNTING INSTRUCTION PENS BAĞLAMA YÖNTEMİ





COLLETS
PENSLER

COLLETS PENSLER



All Gurkan collets

... are 100% run out checked

...are not deformed when clamped to their minimum diameter.

...do not break with small shocks.

... are friendly to your toolholder in term of their smooth surface free of sharp edges and their exact angle geometry to suit the chuck taper and its clamping nut.

Tüm Gürkan pensleri :

% 100 salgı kontrolünden geçmiştir.

Alt çaplarını sıkıldığında deforme olmaz...

Küçük darbelerden kırılmaz.

Çapaksız ve hassas yüzey kalitesi ile tutucunuza zarar vermez ve kusursuz açılal geometrisiyle tutucunuza mükemmel uyum sağlar.

COLLETS PACKAGING / PENS AMBALAJLARI

The different precision levels are distinguished with different colors of caps on the plastic collets boxes.

The bodies of the plastic packs are transparent.

The transparent light blue color bodies are only used for coolant sealed collets.

Belirtilen 3 ayrı hassasiyet grubu penslerin plastik ambalajlarındaki kapak renkleri ile ayrılmaktadır.

Plastik kutuların gövdeleri şeffaftır.

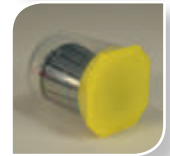
Açık mavi renkli gövdeler sadece sızdırmaz penslerde kullanılmıştır.



Transparent cap : CLASS 2 (max.15-20 micron run out)
Seffaf kapak : CLASS 2 (max.15-20 mikron salgı)



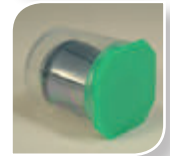
Yellow cap : CLASS 1 (max.10 micron run out)
Sarı Kapak : CLASS 1 (max.10 mikron salgı)



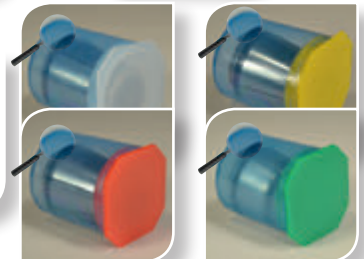
Red cap : TOPAC (max.5 micron run out)
Kırmızı kapak : TOPAC (süper hassas 5 Mikron salgı)



Green cap : only specifies it is a tapping ER collet
Yeşil Kapak : Sadece kılavuz pensi olduğunu belli eder



Light Blue Body : Specifies it is a coolant sealed collet
Açık mavi gövde : Sızdırmaz pens olduğunu belirtir



ER 8 COLLETS ER 8 PENSLER

DIN 6499 / ISO 15488-B

ER 8 CLASS 2

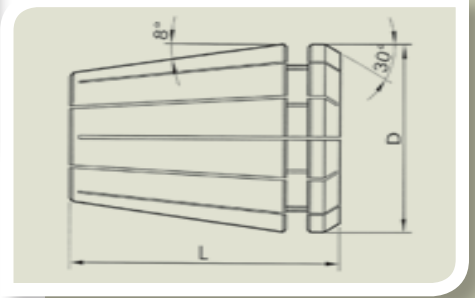
CODE KOD	clamping dia sıkma çapı Ømm	EURO
ER080102	1.0-0.5	7.10
ER080152	1.5-1.0	7.10
ER080202	2.0-1.5	6.10
ER080252	2.5-2.0	6.10
ER080302	3.0-2.5	4.70
ER080352	3.5-3.0	4.70
ER080402	4.0-3.5	4.70
ER080452	4.5-4.0	4.70
ER080502	5.0-4.5	4.70

ER 8 CLASS 1

CODE KOD	clamping dia sıkma çapı Ømm	EURO
ER080101	1.0-0.5	8.40
ER080151	1.5-1.0	8.40
ER080201	2.0-1.5	7.20
ER080251	2.5-2.0	7.20
ER080301	3.0-2.5	5.80
ER080351	3.5-3.0	5.80
ER080401	4.0-3.5	5.80
ER080451	4.5-4.0	5.80
ER080501	5.0-4.5	5.80

ER 8 TOPAC (5 micron)

CODE KOD	clamping dia sıkma çapı Ømm	EURO
ER08010T	1.0-0.5	12.40
ER08015T	1.5-1.0	12.40
ER08020T	2.0-1.5	10.20
ER08025T	2.5-2.0	10.20
ER08030T	3.0-2.5	8.00
ER08035T	3.5-3.0	8.00
ER08040T	4.0-3.5	8.00
ER08045T	4.5-4.0	8.00
ER08050T	5.0-4.5	8.00



D	8.5mm
L	13mm
CLAMPING RANGE TUTMA ARALIĞI	1.0-5.0mm
COLLAPSING CAPACITY TUTMA DARALMA KAPASİTESİ	0.5mm

ER 8 COLLET SETS (Ø1-5mm 9 pcs.) / ER 8 Pens Takımları (Ø1-5mm 9Ad.)

ER 8 COLLET SET CLASS 2

CODE/KOD	content - içeriği	EURO
ER08SET2	9pcs ER8 collets Class 2 Ø1-5mm in 0.5mm increment in plastic box 9ad. ER8 pens Class 2 Ø1-5mm arası 0.5mm atlamalı plastik kutuda	53.10

ER 8 COLLET SET CLASS 1

CODE/KOD	content - içeriği	EURO
ER08SET1	9pcs ER8 collets Class 1 Ø1-5mm in 0.5mm increment in plastic box 9ad. ER8 pens Class 1 Ø1-5mm arası 0.5mm atlamalı plastik kutuda	63.40

ER 8 COLLET SET TOPAC (5 micron)

CODE/KOD	content - içeriği	EURO
ER08SETT	9pcs ER8 collets TOPAC Ø1-5mm in 0.5mm increment in plastic box 9ad. ER8 pens TOPAC Ø1-5mm arası 0.5mm atlamalı plastik kutuda	88.40



ER 11 COLLETS

ER 11 PENSLELER

DIN 6499 / ISO 15488-B

ER 11 CLASS 2

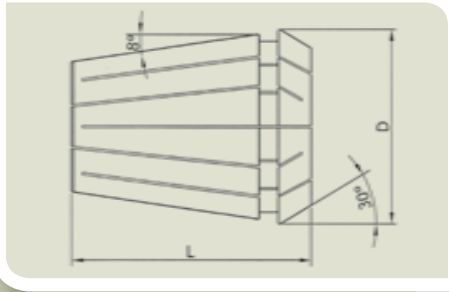
CODE KOD	clamping dia sıkma çapı Ømm	EURO
ER110102	1.0-0.5	6.50
ER110152	1.5-1.0	6.50
ER110202	2.0-1.5	5.50
ER110252	2.5-2.0	5.50
ER110302	3.0-2.5	4.10
ER110352	3.5-3.0	4.10
ER110402	4.0-3.5	4.10
ER110452	4.5-4.0	4.10
ER110502	5.0-4.5	4.10
ER110552	5.5-5.0	4.10
ER110602	6.0-5.5	4.10
ER110652	6.5-6.0	4.10
ER110702	7.0-6.5	4.10
ER110752*	7.5-7.3	10.90
ER110802*	8.0-7.8	10.90

ER 11 CLASS 1

CODE KOD	clamping dia sıkma çapı Ømm	EURO
ER110101	1.0-0.5	7.70
ER110151	1.5-1.0	7.70
ER110201	2.0-1.5	6.60
ER110251	2.5-2.0	6.60
ER110301	3.0-2.5	5.10
ER110351	3.5-3.0	5.10
ER110401	4.0-3.5	5.10
ER110451	4.5-4.0	5.10
ER110501	5.0-4.5	5.10
ER110551	5.5-5.0	5.10
ER110601	6.0-5.5	5.10
ER110651	6.5-6.0	5.10
ER110701	7.0-6.5	5.10
ER110751*	7.5-7.3	13.50
ER110801*	8.0-7.8	13.50

ER 11 TOPAC (5 micron)

CODE KOD	clamping dia sıkma çapı Ømm	EURO
ER11010T	1.0-0.5	11.70
ER11015T	1.5-1.0	11.70
ER11020T	2.0-1.5	9.60
ER11025T	2.5-2.0	9.60
ER11030T	3.0-2.5	7.30
ER11035T	3.5-3.0	7.30
ER11040T	4.0-3.5	7.30
ER11045T	4.5-4.0	7.30
ER11050T	5.0-4.5	7.30
ER11055T	5.5-5.0	7.30
ER11060T	6.0-5.5	7.30
ER11065T	6.5-6.0	7.30
ER11070T	7.0-6.5	7.30
ER11075T*	7.5-7.3	17.50
ER11080T*	8.0-7.8	17.50



D	11.5mm
L	18mm
CLAMPING RANGE TUTMA ARALIĞI	1.0-8.0mm
COLLAPSING CAPACITY TUTMA DARALMA KAPASİTESİ	0.5mm

* Ø>7 (over Ø7mm dia) collets have shorter lengths than standards. Their collapsing capacity is only Ø -0,2mm
 * Ø>7 (Ø7mm üstü çap) penslerin boyu standarttan daha kısadır. Daralma kapasitesi sadece Ø -0,2mm dir.
 Inch sized collets are also available please see its section / İnç ölçü pensler için lütfen ilgili bölüme bakınız.

ER 11 COLLETS ER 11 PENSLER

ER 11 COLLET SETS (Ø1-7mm 13 pcs.) / ER 11 Pens Takımları (Ø1-7mm 13Ad.)

ER 11 COLLET SET CLASS 2

CODE/KOD	content - içeriği	EURO
ER11SET2	13pcs ER11 collets Class 2 Ø1-7mm in 0.5mm increment in plastic box 13ad. ER11 pens Class 2 Ø1-7mm arası 0.5mm atlamalı plastik kutuda	64.10

ER 11 COLLET SET CLASS 1

CODE/KOD	content - içeriği	EURO
ER11SET1	13pcs ER11 collets Class 1 Ø1-7mm in 0.5mm increment in plastic box 13ad. ER11 pens Class 1 Ø1-7mm arası 0.5mm atlamalı plastik kutuda	77.70

ER 11 COLLET SET TOPAC (5 micron)

CODE/KOD	content - içeriği	EURO
ER11SETT	13pcs ER11 collets TOPAC Ø1-7mm in 0.5mm increment in plastic box 13ad. ER11 pens TOPAC Ø1-7mm arası 0.5mm atlamalı plastik kutuda	111.50



ER 16 COLLETS

ER 16 PENSLELER

DIN 6499 / ISO 15488-B

ER 16 CLASS 2

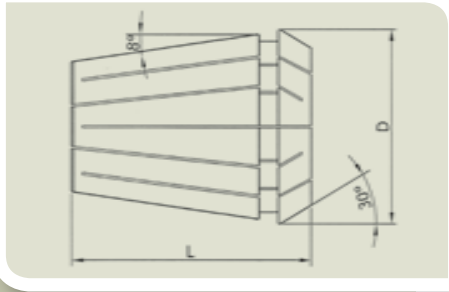
CODE KOD	clamping dia sıkma çapı Ømm	EURO
ER160102	1.0-0.5	5.20
ER160152	1.5-1.0	5.20
ER160202	2.0-1.5	4.30
ER160252	2.5-2.0	4.30
ER160302	3.0-2.5	3.30
ER160352	3.5-2.5	4.30
ER160402	4.0-3.0	3.30
ER160452	4.5-3.5	4.30
ER160502	5.0-4.0	3.30
ER160552	5.5-4.5	4.30
ER160602	6.0-5.0	3.30
ER160652	6.5-5.5	4.30
ER160702	7.0-6.0	3.30
ER160752	7.5-6.5	4.30
ER160802	8.0-7.0	3.30
ER160852	8.5-7.5	4.30
ER160902	9.0-8.0	3.30
ER160952	9.5-8.5	4.30
ER161002	10.0-9.0	3.30
ER161052*	10.5-10.3	10.90
ER161102*	11.0-10.8	10.90
ER161152*	11.5-11.3	10.90
ER161202*	12.0-11.8	10.90

ER 16 CLASS 1

CODE KOD	clamping dia sıkma çapı Ømm	EURO
ER160101	1.0-0.5	6.90
ER160151	1.5-1.0	6.90
ER160201	2.0-1.5	5.80
ER160251	2.5-2.0	5.80
ER160301	3.0-2.5	4.60
ER160351	3.5-2.5	5.60
ER160401	4.0-3.0	4.60
ER160451	4.5-3.5	5.60
ER160501	5.0-4.0	4.60
ER160551	5.5-4.5	5.60
ER160601	6.0-5.0	4.60
ER160651	6.5-5.5	5.60
ER160701	7.0-6.0	4.60
ER160751	7.5-6.5	5.60
ER160801	8.0-7.0	4.60
ER160851	8.5-7.5	5.60
ER160901	9.0-8.0	4.60
ER160951	9.5-8.5	5.60
ER161001	10.0-9.0	4.60
ER161051*	10.5-10.3	13.50
ER161101*	11.0-10.8	13.50
ER161151*	11.5-11.3	13.50
ER161201*	12.0-11.8	13.50

ER 16 TOPAC (5 micron)

CODE KOD	clamping dia sıkma çapı Ømm	EURO
ER16010T	1.0-0.5	10.70
ER16015T	1.5-1.0	10.70
ER16020T	2.0-1.5	8.60
ER16025T	2.5-2.0	8.60
ER16030T	3.0-2.5	6.50
ER16035T	3.5-2.5	7.50
ER16040T	4.0-3.0	6.50
ER16045T	4.5-3.5	7.50
ER16050T	5.0-4.0	6.50
ER16055T	5.5-4.5	7.50
ER16060T	6.0-5.0	6.50
ER16065T	6.5-5.5	7.50
ER16070T	7.0-6.0	6.50
ER16075T	7.5-6.5	7.50
ER16080T	8.0-7.0	6.50
ER16085T	8.5-7.5	7.50
ER16090T	9.0-8.0	6.50
ER16095T	9.5-8.5	7.50
ER16100T	10.0-9.0	6.50
ER16105T*	10.5-10.3	17.50
ER16110T*	11.0-10.8	17.50
ER16115T*	11.5-11.3	17.50
ER16120T*	12.0-11.8	17.50



D	17.0mm
L	27.5mm
CLAMPING RANGE TUTMA ARALIĞI	1.0-12.0mm
COLLAPSING CAPACITY TUTMA DARALMA KAPASİTESİ	1.0mm

* Ø>10 (over Ø10mm dia) collets have shorter lengths than standards. Their collapsing capacity is only Ø -0,2mm
 * Ø>10 (Ø10mm üstü çap) penslerin boyu standarttan daha kısadır. Daralma kapasitesi sadece Ø -0,2mm dir.

For Ø1-3mm collets, the collapsing capacity is Ø-0,5mm / Ø1-3mm arası penslerde daralma kapasitesi Ø -0.5 mm dir
 Inch sized collets are also available please see its section / İnç ölçü pensler için lütfen ilgili bölüme bakınız.

ER 16 COLLETS ER 16 PENSLER

ER 16 COLLET SETS (Ø1-10mm 10 pcs.) / ER 16 Pens Takımları (Ø1-10mm 10Ad.)

ER 16 COLLET SET CLASS 2

CODE/KOD	content - içeriği	EURO
ER16SET2	10pcs ER16 collets Class 2 Ø1-10mm in 1.0mm increment in plastic box 10ad. ER16 pens Class 2 Ø1-10mm arası 1.0mm atlamalı plastik kutuda	39.10

ER 16 COLLET SET CLASS 1

CODE/KOD	content - içeriği	EURO
ER16SET1	10pcs ER16 collets Class 1 Ø1-10mm in 1.0mm increment in plastic box 10ad. ER16 pens Class 1 Ø1-10mm arası 1.0mm atlamalı plastik kutuda	52.70

ER 16 COLLET SET TOPAC (5 micron)

CODE/KOD	content - içeriği	EURO
ER16SETT	10pcs ER16 collets TOPAC Ø1-10mm in 1.0mm increment in plastic box 10ad. ER16 pens TOPAC Ø1-10mm arası 1.0mm atlamalı plastik kutuda	74.50



ER 20 COLLETS ER 20 PENSLER

DIN 6499 / ISO 15488-B

ER 20 CLASS 2

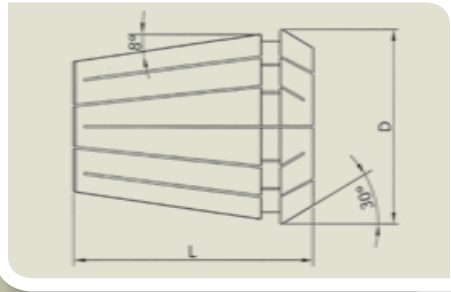
CODE KOD	clamping dia sıkma çapı Ømm	EURO
ER200102	1.0-0.5	5.50
ER200152	1.5-1.0	5.50
ER200202	2.0-1.5	4.80
ER200252	2.5-2.0	4.80
ER200302	3.0-2.5	3.50
ER200352	3.5-2.5	4.80
ER200402	4.0-3.0	3.50
ER200452	4.5-3.5	4.80
ER200502	5.0-4.0	3.50
ER200552	5.5-4.5	4.80
ER200602	6.0-5.0	3.50
ER200652	6.5-5.5	4.80
ER200702	7.0-6.0	3.50
ER200752	7.5-6.5	4.80
ER200802	8.0-7.0	3.50
ER200852	8.5-7.5	4.80
ER200902	9.0-8.0	3.50
ER200952	9.5-8.5	4.80
ER201002	10.0-9.0	3.50
ER201052	10.5-9.5	4.80
ER201102	11.0-10.0	3.50
ER201152	11.5-10.5	4.80
ER201202	12.0-11.0	3.50
ER201252	12.5-11.5	4.80
ER201302	13.0-12.0	3.50
ER201352*	13.5-13.3	10.90
ER201402*	14.0-13.8	10.90
ER201452*	14.5-14.3	10.90
ER201502*	15.0-14.8	10.90
ER201552*	15.5-15.3	10.90
ER201602*	16.0-15.8	10.90

ER 20 CLASS 1

CODE KOD	clamping dia sıkma çapı Ømm	EURO
ER200101	1.0-0.5	7.20
ER200151	1.5-1.0	7.20
ER200201	2.0-1.5	6.40
ER200251	2.5-2.0	6.40
ER200301	3.0-2.5	4.90
ER200351	3.5-2.5	6.20
ER200401	4.0-3.0	4.90
ER200451	4.5-3.5	6.20
ER200501	5.0-4.0	4.90
ER200551	5.5-4.5	6.20
ER200601	6.0-5.0	4.90
ER200651	6.5-5.5	6.20
ER200701	7.0-6.0	4.90
ER200751	7.5-6.5	6.20
ER200801	8.0-7.0	4.90
ER200851	8.5-7.5	6.20
ER200901	9.0-8.0	4.90
ER200951	9.5-8.5	6.20
ER201001	10.0-9.0	4.90
ER201051	10.5-9.5	6.20
ER201101	11.0-10.0	4.90
ER201151	11.5-10.5	6.20
ER201201	12.0-11.0	4.90
ER201251	12.5-11.5	6.20
ER201301	13.0-12.0	4.90
ER201351*	13.5-13.3	13.50
ER201401*	14.0-13.8	13.50
ER201451*	14.5-14.3	13.50
ER201501*	15.0-14.8	13.50
ER201551*	15.5-15.3	13.50
ER201601*	16.0-15.8	13.50

ER 20 TOPAC (5 micron)

CODE KOD	clamping dia sıkma çapı Ømm	EURO
ER20010T	1.0-0.5	11.00
ER20015T	1.5-1.0	11.00
ER20020T	2.0-1.5	9.20
ER20025T	2.5-2.0	9.20
ER20030T	3.0-2.5	6.70
ER20035T	3.5-2.5	8.00
ER20040T	4.0-3.0	6.70
ER20045T	4.5-3.5	8.00
ER20050T	5.0-4.0	6.70
ER20055T	5.5-4.5	8.00
ER20060T	6.0-5.0	6.70
ER20065T	6.5-5.5	8.00
ER20070T	7.0-6.0	6.70
ER20075T	7.5-6.5	8.00
ER20080T	8.0-7.0	6.70
ER20085T	8.5-7.5	8.00
ER20090T	9.0-8.0	6.70
ER20095T	9.5-8.5	8.00
ER20100T	10.0-9.0	6.70
ER20105T	10.5-9.5	8.00
ER20110T	11.0-10.0	6.70
ER20115T	11.5-10.5	8.00
ER20120T	12.0-11.0	6.70
ER20125T	12.5-11.5	8.00
ER20130T	13.0-12.0	6.70
ER20135T*	13.5-13.3	17.50
ER20140T*	14.0-13.8	17.50
ER20145T*	14.5-14.3	17.50
ER20150T*	15.0-14.8	17.50
ER20155T*	15.5-15.3	17.50
ER20160T*	16.0-15.8	17.50



D	21.0mm
L	31.5mm
CLAMPING RANGE TUTMA ARALIĞI	1.0-16.0mm
COLLAPSING CAPACITY TUTMA DARALMA KAPASİTESİ	1.0mm

* Ø>13 (over Ø13mm dia) collets have shorter lengths than standards. Their collapsing capacity is only Ø -0,2mm
* Ø>13 (Ø13mm üstü çap) penslerin boyu standarttan daha kısadır. Daralma kapasitesi sadece Ø -0,2mm dir.

For Ø1-3mm collets, the collapsing capacity is Ø-0,5mm / Ø1-3mm arası penslerde daralma kapasitesi Ø -0.5 mm dir
Inch sized collets are also available please see its section / İnç ölçü pensler için lütfen ilgili bölüme bakınız.

ER 20 COLLETS ER 20 PENSLER

ER 20 COLLET SETS (Ø2-13mm 12pcs.) / ER 20 Pens Takımları (Ø2-13mm 12 Ad.)

ER 20 COLLET SET CLASS 2

CODE/KOD	content - içeriği	EURO
ER20SET2	12pcs ER20 collets Class 2 Ø2-13mm in 1.0mm increment in plastic box 12Ad. ER20 pens Class 2 Ø2-13mm arası 1.0mm atlamalı plastik kutuda	46.70

ER 20 COLLET SET CLASS 1

CODE/KOD	content - içeriği	EURO
ER20SET1	12pcs ER20 collets Class 1 Ø2-13mm in 1.0mm increment in plastic box 12Ad. ER20 pens Class 1 Ø2-13mm arası 1.0mm atlamalı plastik kutuda	63.70

ER 20 COLLET SET TOPAC (5 micron)

CODE/KOD	content - içeriği	EURO
ER20SETT	12pcs ER20 collets TOPAC Ø2-13mm in 1.0mm increment in plastic box 12Ad. ER20 pens TOPAC Ø2-13mm arası 1.0mm atlamalı plastik kutuda	86.30



ER 25 COLLETS

ER 25 PENSLER

DIN 6499 / ISO 15488-B

ER 25 CLASS 2

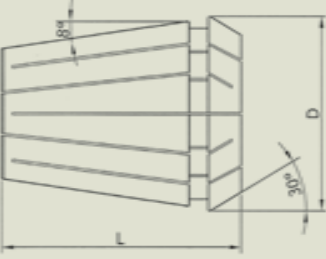
CODE KOD	clamping dia sıkma çapı Ømm	EURO
ER250102	1.0-0.5	6.50
ER250152	1.5-1.0	6.50
ER250202	2.0-1.5	5.00
ER250252	2.5-2.0	5.00
ER250302	3.0-2.5	3.80
ER250352	3.5-2.5	5.00
ER250402	4.0-3.0	3.80
ER250452	4.5-3.5	5.00
ER250502	5.0-4.0	3.80
ER250552	5.5-4.5	5.00
ER250602	6.0-5.0	3.80
ER250652	6.5-5.5	5.00
ER250702	7.0-6.0	3.80
ER250752	7.5-6.5	5.00
ER250802	8.0-7.0	3.80
ER250852	8.5-7.5	5.00
ER250902	9.0-8.0	3.80
ER250952	9.5-8.5	5.00
ER251002	10.0-9.0	3.80
ER251052	10.5-9.5	5.00
ER251102	11.0-10.0	3.80
ER251152	11.5-10.5	5.00
ER251252	12.0-11.0	3.80
ER251252	12.5-11.5	5.00
ER251302	13.0-12.0	3.80
ER251352	13.5-12.5	5.00
ER251402	14.0-13.0	3.80
ER251452	14.5-13.5	5.00
ER251502	15.0-14.0	3.80
ER251552	15.5-14.5	5.00
ER251602	16.0-15.0	3.80
ER251652*	16.5-16.3	10.90
ER251702*	17.0-16.8	10.90
ER251752*	17.5-17.3	10.90
ER251802*	18.0-17.8	10.90
ER251852*	18.5-18.3	10.90
ER251902*	19.0-18.8	10.90
ER251952*	19.5-19.3	10.90
ER252002*	20.0-19.8	10.90

ER 25 CLASS 1

CODE KOD	clamping dia sıkma çapı Ømm	EURO
ER250101	1.0-0.5	8.20
ER250151	1.5-1.0	8.20
ER250201	2.0-1.5	6.60
ER250251	2.5-2.0	6.60
ER250301	3.0-2.5	5.20
ER250351	3.5-2.5	6.40
ER250401	4.0-3.0	5.20
ER250451	4.5-3.5	6.40
ER250501	5.0-4.0	5.20
ER250551	5.5-4.5	6.40
ER250601	6.0-5.0	5.20
ER250651	6.5-5.5	6.40
ER250701	7.0-6.0	5.20
ER250751	7.5-6.5	6.40
ER250801	8.0-7.0	5.20
ER250851	8.5-7.5	6.40
ER250901	9.0-8.0	5.20
ER250951	9.5-8.5	6.40
ER251001	10.0-9.0	5.20
ER251051	10.5-9.5	6.40
ER251101	11.0-10.0	5.20
ER251151	11.5-10.5	6.40
ER251251	12.0-11.0	5.20
ER251251	12.5-11.5	6.40
ER251301	13.0-12.0	5.20
ER251351	13.5-12.5	6.40
ER251401	14.0-13.0	5.20
ER251451	14.5-13.5	6.40
ER251501	15.0-14.0	5.20
ER251551	15.5-14.5	6.40
ER251601	16.0-15.0	5.20
ER251651*	16.5-16.3	13.50
ER251701*	17.0-16.8	13.50
ER251751*	17.5-17.3	13.50
ER251801*	18.0-17.8	13.50
ER251851*	18.5-18.3	13.50
ER251901*	19.0-18.8	13.50
ER251951*	19.5-19.3	13.50
ER252001*	20.0-19.8	13.50

ER 25 TOPAC (5 micron)

CODE KOD	clamping dia sıkma çapı Ømm	EURO
ER25010T	1.0-0.5	12.00
ER25015T	1.5-1.0	12.00
ER25020T	2.0-1.5	9.40
ER25025T	2.5-2.0	9.40
ER25030T	3.0-2.5	7.00
ER25035T	3.5-2.5	8.20
ER25040T	4.0-3.0	7.00
ER25045T	4.5-3.5	8.20
ER25050T	5.0-4.0	7.00
ER25055T	5.5-4.5	8.20
ER25060T	6.0-5.0	7.00
ER25065T	6.5-5.5	8.20
ER25070T	7.0-6.0	7.00
ER25075T	7.5-6.5	8.20
ER25080T	8.0-7.0	7.00
ER25085T	8.5-7.5	8.20
ER25090T	9.0-8.0	7.00
ER25095T	9.5-8.5	8.20
ER25100T	10.0-9.0	7.00
ER25105T	10.5-9.5	8.20
ER25110T	11.0-10.0	7.00
ER25115T	11.5-10.5	8.20
ER25125T	12.0-11.0	7.00
ER25125T	12.5-11.5	8.20
ER25130T	13.0-12.0	7.00
ER25135T	13.5-12.5	8.20
ER25140T	14.0-13.0	7.00
ER25145T	14.5-13.5	8.20
ER25150T	15.0-14.0	7.00
ER25155T	15.5-14.5	8.20
ER25160T	16.0-15.0	7.00
ER25165T*	16.5-16.3	17.50
ER25170T*	17.0-16.8	17.50
ER25175T*	17.5-17.3	17.50
ER25180T*	18.0-17.8	17.50
ER25185T*	18.5-18.3	17.50
ER25190T*	19.0-18.8	17.50
ER25195T*	19.5-19.3	17.50
ER25200T*	20.0-19.8	17.50



D	26.0mm
L	34.0mm
CLAMPING RANGE TUTMA ARALIĞI	1.0-20.0mm
COLLAPSING CAPACITY TUTMA DARALMA KAPASİTESİ	1.0mm

* Ø>16 (over Ø16mm dia) collets have shorter lengths than standards. Their collapsing capacity is only Ø -0,2mm
* Ø>16 (Ø16mm üstü çap) penslerin boyu standarttan daha kısadır. Daralma kapasitesi sadece Ø -0,2mm dir.

For Ø1-3mm collets, the collapsing capacity is Ø-0,5mm / Ø1-3mm arası penslerde daralma kapasitesi Ø -0.5 mm dir
Inch sized collets are also available please see its section / İnç ölçü pensler için lütfen ilgili bölüme bakınız.

ER 25 COLLETS ER 25 PENSLER

ER 25 COLLET SETS (Ø2-16mm 15pcs.) / ER 25 Pens Takımları (Ø2-16mm 15Ad.)

ER 25 COLLET SET CLASS 2

CODE/KOD	content - içeriği	EURO
ER25SET2	15pcs ER25 collets Class 2 Ø2-16mm in 1.0mm increment in plastic box 15Ad. ER25 pens Class 2 Ø2-16mm arası 1.0mm atlamalı plastik kutuda	64.00

ER 25 COLLET SET CLASS 1

CODE/KOD	content - içeriği	EURO
ER25SET1	15pcs ER25 collets Class 1 Ø2-16mm in 1.0mm increment in plastic box 15Ad. ER25 pens Class 1 Ø2-16mm arası 1.0mm atlamalı plastik kutuda	85.20

ER 25 COLLET SET TOPAC (5 micron)

CODE/KOD	content - içeriği	EURO
ER25SETT	15pcs ER25 collets TOPAC Ø2-16mm in 1.0mm increment in plastic box 15Ad. ER25 pens TOPAC Ø2-16mm arası 1.0mm atlamalı plastik kutuda	113.20



ER 32 COLLETS ER 32 PENSLELER

DIN 6499 / ISO 15488-B

ER 32 CLASS 2

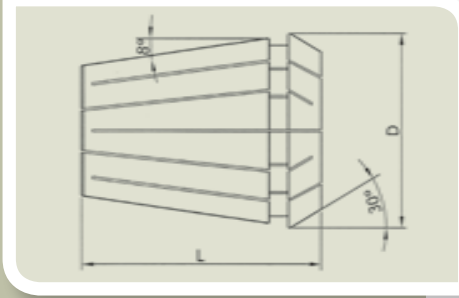
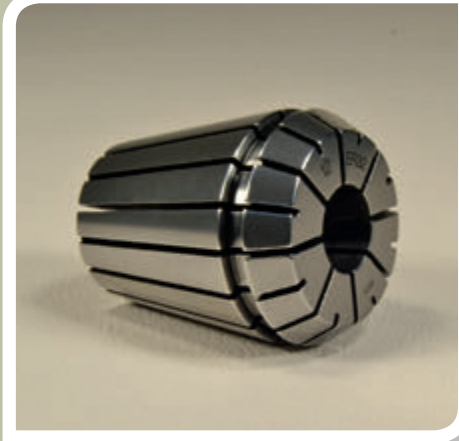
CODE KOD	clamping dia sıkma çapı Ømm	EURO
ER320102	1.0-0.5	8.30
ER320152	1.5-1.0	8.30
ER320202	2.0-1.5	6.80
ER320252	2.5-2.0	6.80
ER320302	3.0-2.5	4.00
ER320352	3.5-2.5	5.80
ER320402	4.0-3.0	4.00
ER320452	4.5-3.5	5.80
ER320502	5.0-4.0	4.00
ER320552	5.5-4.5	5.80
ER320602	6.0-5.0	4.00
ER320652	6.5-5.5	5.80
ER320702	7.0-6.0	4.00
ER320752	7.5-6.5	5.80
ER320802	8.0-7.0	4.00
ER320852	8.5-7.5	5.80
ER320902	9.0-8.0	4.00
ER320952	9.5-8.5	5.80
ER321002	10.0-9.0	4.00
ER321052	10.5-9.5	5.80
ER321102	11.0-10.0	4.00
ER321152	11.5-10.5	5.80
ER321252	12.0-11.0	4.00
ER321252	12.5-11.5	5.80
ER321302	13.0-12.0	4.00
ER321352	13.5-12.5	5.80
ER321402	14.0-13.0	4.00
ER321452	14.5-13.5	5.80
ER321502	15.0-14.0	4.00
ER321552	15.5-14.5	5.80
ER321602	16.0-15.0	4.00
ER321652	16.5-15.5	5.80
ER321702	17.0-16.0	4.00
ER321752	17.5-16.5	5.80
ER321802	18.0-17.0	4.00
ER321852	18.5-17.5	5.80
ER321902	19.0-18.0	4.00
ER321952	19.5-18.5	5.80
ER322002	20.0-19.0	4.00
ER322102*	21.0-20.8	10.90
ER322202*	22.0-21.8	10.90
ER322302*	23.0-22.8	10.90
ER322402*	24.0-23.8	10.90
ER322502*	25.0-24.8	10.90

ER 32 CLASS 1

CODE KOD	clamping dia sıkma çapı Ømm	EURO
ER320101	1.0-0.5	10.30
ER320151	1.5-1.0	10.30
ER320201	2.0-1.5	8.80
ER320251	2.5-2.0	8.80
ER320301	3.0-2.5	5.60
ER320351	3.5-2.5	7.40
ER320401	4.0-3.0	5.60
ER320451	4.5-3.5	7.40
ER320501	5.0-4.0	5.60
ER320551	5.5-4.5	7.40
ER320601	6.0-5.0	5.60
ER320651	6.5-5.5	7.40
ER320701	7.0-6.0	5.60
ER320751	7.5-6.5	7.40
ER320801	8.0-7.0	5.60
ER320851	8.5-7.5	7.40
ER320901	9.0-8.0	5.60
ER320951	9.5-8.5	7.40
ER321001	10.0-9.0	5.60
ER321051	10.5-9.5	7.40
ER321101	11.0-10.0	5.60
ER321151	11.5-10.5	7.40
ER321251	12.0-11.0	5.60
ER321251	12.5-11.5	7.40
ER321301	13.0-12.0	5.60
ER321351	13.5-12.5	7.40
ER321401	14.0-13.0	5.60
ER321451	14.5-13.5	7.40
ER321501	15.0-14.0	5.60
ER321551	15.5-14.5	7.40
ER321601	16.0-15.0	5.60
ER321651	16.5-15.5	7.40
ER321701	17.0-16.0	5.60
ER321751	17.5-16.5	7.40
ER321801	18.0-17.0	5.60
ER321851	18.5-17.5	7.40
ER321901	19.0-18.0	5.60
ER321951	19.5-18.5	7.40
ER322001	20.0-19.0	5.60
ER322101*	21.0-20.8	13.50
ER322201*	22.0-21.8	13.50
ER322301*	23.0-22.8	13.50
ER322401*	24.0-23.8	13.50
ER322501*	25.0-24.8	13.50

ER 32 TOPAC (5 micron)

CODE KOD	clamping dia sıkma çapı Ømm	EURO
ER32010T	1.0-0.5	12.50
ER32015T	1.5-1.0	12.50
ER32020T	2.0-1.5	11.00
ER32025T	2.5-2.0	11.00
ER32030T	3.0-2.5	7.30
ER32035T	3.5-2.5	9.10
ER32040T	4.0-3.0	7.30
ER32045T	4.5-3.5	9.10
ER32050T	5.0-4.0	7.30
ER32055T	5.5-4.5	9.10
ER32060T	6.0-5.0	7.30
ER32065T	6.5-5.5	9.10
ER32070T	7.0-6.0	7.30
ER32075T	7.5-6.5	9.10
ER32080T	8.0-7.0	7.30
ER32085T	8.5-7.5	9.10
ER32090T	9.0-8.0	7.30
ER32095T	9.5-8.5	9.10
ER32100T	10.0-9.0	7.30
ER32105T	10.5-9.5	9.10
ER32110T	11.0-10.0	7.30
ER32115T	11.5-10.5	9.10
ER32125T	12.0-11.0	7.30
ER32125T	12.5-11.5	9.10
ER32130T	13.0-12.0	7.30
ER32135T	13.5-12.5	9.10
ER32140T	14.0-13.0	7.30
ER32145T	14.5-13.5	9.10
ER32150T	15.0-14.0	7.30
ER32155T	15.5-14.5	9.10
ER32160T	16.0-15.0	7.30
ER32165T	16.5-15.5	9.10
ER32170T	17.0-16.0	7.30
ER32175T	17.5-16.5	9.10
ER32180T	18.0-17.0	7.30
ER32185T	18.5-17.5	9.10
ER32190T	19.0-18.0	7.30
ER32195T	19.5-18.5	9.10
ER32200T	20.0-19.0	7.30
ER32210T*	21.0-20.8	17.50
ER32220T*	22.0-21.8	17.50
ER32230T*	23.0-22.8	17.50
ER32240T*	24.0-23.8	17.50
ER32250T*	25.0-24.8	17.50



D	33.0mm
L	40.0mm
CLAMPING RANGE TUTMA ARALIĞI	1.0-25.0mm
COLLAPSING CAPACITY TUTMA DARALMA KAPASİTESİ	1.0mm

* Ø>20 (over Ø20mm dia) collets have shorter lengths than standards. Their collapsing capacity is only Ø -0,2mm
* Ø>20 (Ø20mm üstü çap) penslerin boyu standarttan daha kısadır. Daralma kapasitesi sadece Ø -0,2mm dir.

For Ø1-3mm collets, the collapsing capacity is Ø-0,5mm / Ø1-3mm arası penslerde daralma kapasitesi Ø -0.5 mm dir
Inch sized collets are also available please see its section / İnç ölçü pensler için lütfen ilgili bölüme bakınız.

ER 32 COLLETS ER 32 PENSLER

ER 32 COLLET SETS (Ø3-20mm 18pcs.) / ER 32 Pens Takımları (Ø3-20mm 18Ad.)

ER 32 COLLET SET CLASS 2

CODE/KOD	content - içeriği	EURO
ER32SET2	18pcs ER32 collets Class 2 Ø3-20mm in 1.0mm increment in plastic box 18Ad. ER25 pens Class 2 Ø3-20mm arası 1.0mm atlamalı plastik kutuda	79.00

ER 32 COLLET SET CLASS 1

CODE/KOD	content - içeriği	EURO
ER32SET1	18pcs ER32 collets Class 1 Ø3-20mm in 1.0mm increment in plastic box 18Ad. ER25 pens Class 1 Ø3-20mm arası 1.0mm atlamalı plastik kutuda	107.80

ER 32 COLLET SET TOPAC (5 micron)

CODE/KOD	content - içeriği	EURO
ER32SETT	18pcs ER32 collets TOPAC Ø3-20mm in 1.0mm increment in plastic box 18Ad. ER25 pens TOPAC Ø3-20mm arası 1.0mm atlamalı plastik kutuda	138.40



ER 40 COLLETS ER 40 PENSLELER

DIN 6499 / ISO 15488-B

ER 40 CLASS 2

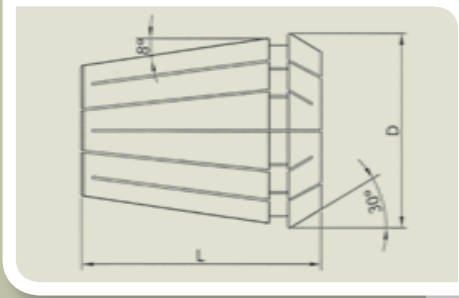
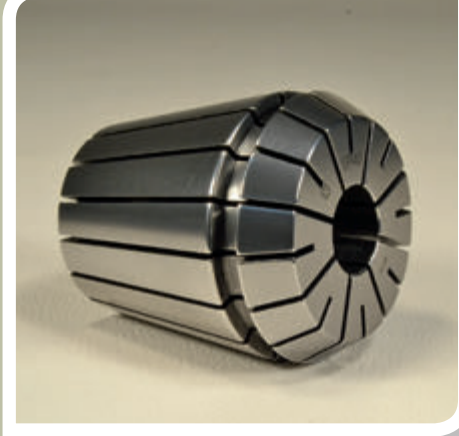
CODE KOD	clamping dia sıkma çapı Ømm	EURO
ER400102	1.0-0.5	10.50
ER400152	1.5-1.0	10.50
ER400202	2.0-1.5	8.50
ER400252	2.5-2.0	8.50
ER400302	3.0-2.5	6.90
ER400352	3.5-2.5	6.90
ER400402	4.0-3.0	4.90
ER400452	4.5-3.5	6.90
ER400502	5.0-4.0	4.90
ER400602	6.0-5.0	4.90
ER400702	7.0-6.0	4.90
ER400802	8.0-7.0	4.90
ER400902	9.0-8.0	4.90
ER401002	10.0-9.0	4.90
ER401102	11.0-10.0	4.90
ER401202	12.0-11.0	4.90
ER401302	13.0-12.0	4.90
ER401402	14.0-13.0	4.90
ER401502	15.0-14.0	4.90
ER401602	16.0-15.0	4.90
ER401702	17.0-16.0	4.90
ER401802	18.0-17.0	4.90
ER401902	19.0-18.0	4.90
ER402002	20.0-19.0	4.90
ER402102	21.0-20.0	4.90
ER402202	22.0-21.0	4.90
ER402302	23.0-22.0	4.90
ER402402	24.0-23.0	4.90
ER402502	25.0-24.0	4.90
ER402602	26.0-25.0	4.90
ER402702*	27.0-26.8	11.20
ER402802*	28.0-27.8	11.20
ER402902*	29.0-28.8	11.20
ER403002*	30.0-29.8	11.20
ER403102*	31.0-30.8	11.20
ER403202*	32.0-31.8	11.20

ER 40 CLASS 1

CODE KOD	clamping dia sıkma çapı Ømm	EURO
ER400101	1.0-0.5	12.40
ER400151	1.5-1.0	12.40
ER400201	2.0-1.5	10.40
ER400251	2.5-2.0	10.40
ER400301	3.0-2.5	8.80
ER400351	3.5-2.5	8.80
ER400401	4.0-3.0	6.80
ER400451	4.5-3.5	8.80
ER400501	5.0-4.0	6.80
ER400601	6.0-5.0	6.80
ER400701	7.0-6.0	6.80
ER400801	8.0-7.0	6.80
ER400901	9.0-8.0	6.80
ER401001	10.0-9.0	6.80
ER401101	11.0-10.0	6.80
ER401201	12.0-11.0	6.80
ER401301	13.0-12.0	6.80
ER401401	14.0-13.0	6.80
ER401501	15.0-14.0	6.80
ER401601	16.0-15.0	6.80
ER401701	17.0-16.0	6.80
ER401801	18.0-17.0	6.80
ER401901	19.0-18.0	6.80
ER402001	20.0-19.0	6.80
ER402101	21.0-20.0	6.80
ER402201	22.0-21.0	6.80
ER402301	23.0-22.0	6.80
ER402401	24.0-23.0	6.80
ER402501	25.0-24.0	6.80
ER402601	26.0-25.0	6.80
ER402701*	27.0-26.8	14.00
ER402801*	28.0-27.8	14.00
ER402901*	29.0-28.8	14.00
ER403001*	30.0-29.8	14.00
ER403101*	31.0-30.8	14.00
ER403201*	32.0-31.8	14.00

ER 40 TOPAC (5 micron)

CODE KOD	clamping dia sıkma çapı Ømm	EURO
ER40010T	1.0-0.5	14.30
ER40015T	1.5-1.0	14.30
ER40020T	2.0-1.5	12.30
ER40025T	2.5-2.0	12.30
ER40030T	3.0-2.5	10.70
ER40035T	3.5-2.5	10.70
ER40040T	4.0-3.0	8.70
ER40045T	4.5-3.5	10.70
ER40050T	5.0-4.0	8.70
ER40060T	6.0-5.0	8.70
ER40070T	7.0-6.0	8.70
ER40080T	8.0-7.0	8.70
ER40090T	9.0-8.0	8.70
ER40100T	10.0-9.0	8.70
ER40110T	11.0-10.0	8.70
ER40120T	12.0-11.0	8.70
ER40130T	13.0-12.0	8.70
ER40140T	14.0-13.0	8.70
ER40150T	15.0-14.0	8.70
ER40160T	16.0-15.0	8.70
ER40170T	17.0-16.0	8.70
ER40180T	18.0-17.0	8.70
ER40190T	19.0-18.0	8.70
ER40200T	20.0-19.0	8.70
ER40210T	21.0-20.0	8.70
ER40220T	22.0-21.0	8.70
ER40230T	23.0-22.0	8.70
ER40240T	24.0-23.0	8.70
ER40250T	25.0-24.0	8.70
ER40260T	26.0-25.0	8.70
ER40270T*	27.0-26.8	18.00
ER40280T*	28.0-27.8	18.00
ER40290T*	29.0-28.8	18.00
ER40300T*	30.0-29.8	18.00
ER40310T*	31.0-30.8	18.00
ER40320T*	32.0-31.8	18.00



D	41.0mm
L	46.0mm
CLAMPING RANGE TUTMA ARALIĞI	1.0-32.0mm
COLLAPSING CAPACITY TUTMA DARALMA KAPASİTESİ	1.0mm

* Ø>26 (over Ø26mm dia) collets have shorter lengths than standards. Their collapsing capacity is only Ø -0,2mm
* Ø>26(Ø26mm üstü çap) penslerin boyu standarttan daha kısadır. Daralma kapasitesi sadece Ø -0,2mm dir.

For Ø1-3mm collets, the collapsing capacity is Ø-0,5mm / Ø1-3mm arası penslerde daralma kapasitesi Ø -0.5 mm dir
Inch sized collets are also available please see its section / İnç ölçü pensler için lütfen ilgili bölüme bakınız.

ER 40 COLLETS ER 40 PENSLER

ER 40 COLLET SETS (Ø4-26mm 23pcs.) / ER 40 Pens Takımları (Ø4-26mm 23Ad.)

ER 40 COLLET SET CLASS 2

CODE/KOD	content - içeriği	EURO
ER40SET2	23pcs ER40 collets Class 2 Ø4-26mm in 1.0mm increment in plastic box 23Ad. ER40 pens Class 2 Ø4-26mm arası 1.0mm atlamalı plastik kutuda	125.10

ER 40 COLLET SET CLASS 1

CODE/KOD	content - içeriği	EURO
ER40SET1	23pcs ER40 collets Class 1 Ø4-26mm in 1.0mm increment in plastic box 23Ad. ER40 pens Class 1 Ø4-26mm arası 1.0mm atlamalı plastik kutuda	168.80

ER 40 COLLET SET TOPAC (5 micron)

CODE/KOD	content - içeriği	EURO
ER40SETT	23pcs ER40 collets TOPAC Ø4-26mm in 1.0mm increment in plastic box 23Ad. ER40 pens TOPAC Ø4-26mm arası 1.0mm atlamalı plastik kutuda	212.50



ER 50 COLLETS ER 50 PENSLELER

DIN 6499 / ISO 15488-B

ER 50 CLASS 2

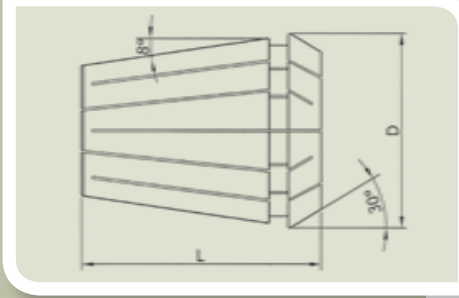
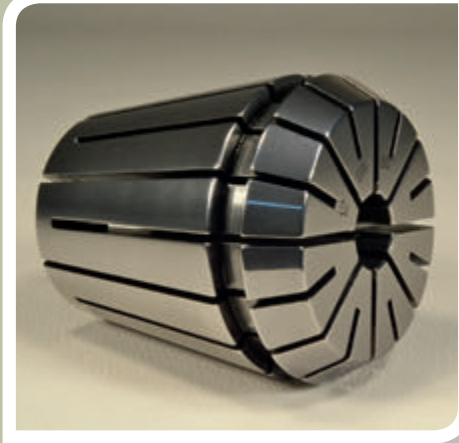
CODE KOD	clamping dia sıkma çapı Ømm	EURO
ER500602	6.0-5.0	14.30
ER500802	8.0-7.0	14.30
ER501002	10.0-9.0	14.30
ER501202	12.0-11.0	14.30
ER501402	14.0-12.0	14.30
ER501602	16.0-14.0	14.30
ER501802	18.0-16.0	14.30
ER502002	20.0-18.0	14.30
ER502202	22.0-20.0	14.30
ER502402	24.0-22.0	14.30
ER502502	25.0-23.0	14.30
ER502602	26.0-24.0	14.30
ER502802	28.0-26.0	14.30
ER503002	30.0-28.0	14.30
ER503202	32.0-30.0	14.30
ER503402	34.0-32.0	14.30
ER503602*	36.0-35.8	28.00
ER503802*	38.0-37.8	28.00
ER504002*	40.0-39.8	28.00

ER 50 CLASS 1

CODE KOD	clamping dia sıkma çapı Ømm	EURO
ER500601	6.0-5.0	16.80
ER500801	8.0-7.0	16.80
ER501001	10.0-9.0	16.80
ER501201	12.0-11.0	16.80
ER501401	14.0-12.0	16.80
ER501601	16.0-14.0	16.80
ER501801	18.0-16.0	16.80
ER502001	20.0-18.0	16.80
ER502201	22.0-20.0	16.80
ER502401	24.0-22.0	16.80
ER502501	25.0-23.0	16.80
ER502601	26.0-24.0	16.80
ER502801	28.0-26.0	16.80
ER503001	30.0-28.0	16.80
ER503201	32.0-30.0	16.80
ER503401	34.0-32.0	16.80
ER503601*	36.0-35.8	30.00
ER503801*	38.0-37.8	30.00
ER504001*	40.0-39.8	30.00

ER 50 TOPAC (5 micron)

CODE KOD	clamping dia sıkma çapı Ømm	EURO
ER50060T	6.0-5.0	20.30
ER50080T	8.0-7.0	20.30
ER50100T	10.0-9.0	20.30
ER50120T	12.0-11.0	20.30
ER50140T	14.0-12.0	20.30
ER50160T	16.0-14.0	20.30
ER50180T	18.0-16.0	20.30
ER50200T	20.0-18.0	20.30
ER50220T	22.0-20.0	20.30
ER50240T	24.0-22.0	20.30
ER50250T	25.0-23.0	20.30
ER50260T	26.0-24.0	20.30
ER50280T	28.0-26.0	20.30
ER50300T	30.0-28.0	20.30
ER50320T	32.0-30.0	20.30
ER50340T	34.0-32.0	20.30
ER50360T*	36.0-35.8	35.00
ER50380T*	38.0-37.8	35.00
ER50400T*	40.0-39.8	35.00



D	52.0mm
L	60.0mm
CLAMPING RANGE TUTMA ARALIĞI	6.0-40.0mm
COLLAPSING CAPACITY TUTMA DARALMA KAPASİTESİ	2.0mm

ER 50 COLLETS ER 50 PENSLER

ER 50 COLLET SETS (Ø12-34mm 12pcs.) / ER 50 Pens Takımları (Ø12-34mm 12Ad.)

ER 50 COLLET SET CLASS 2

CODE/KOD	content - içeriği	EURO
ER50SET2	12pcs ER50 collets Class 2 Ø12-34mm in 2.0mm increment in plastic box 12Ad. ER50 pens Class 2 Ø12-34mm arası 2.0mm atlamalı plastik kutuda	185.00

ER 50 COLLET SET CLASS 1

CODE/KOD	content - içeriği	EURO
ER50SET1	12pcs ER50 collets Class 1 Ø12-34mm in 2.0mm increment in plastic box 12Ad. ER50 pens Class 1 Ø12-34mm arası 2.0mm atlamalı plastik kutuda	215.00

ER 50 COLLET SET TOPAC (5 micron)

CODE/KOD	content - içeriği	EURO
ER50SETT	12pcs ER50 collets TOPAC Ø12-34mm in 2.0mm increment in plastic box 12Ad. ER50 pens TOPAC Ø12-34mm arası 2.0mm atlamalı plastik kutuda	257.00



Normally ER50 sets do not contain 25 mm collet. It can be included in the set instead of 26mm if requested when ordering.
Normalde ER50 pens takımlarında 25mm pens yoktur. Bu pens sipariş esnasında istendiğinde 26mm nin yerine takıma konulabilir.





**COOLANT SEALED ER COLLETS
TAPPING ER COLLETS
INCH SIZES ER COLLETS
DIN 6388 / ISO10897-B (OZ25) COLLETS**

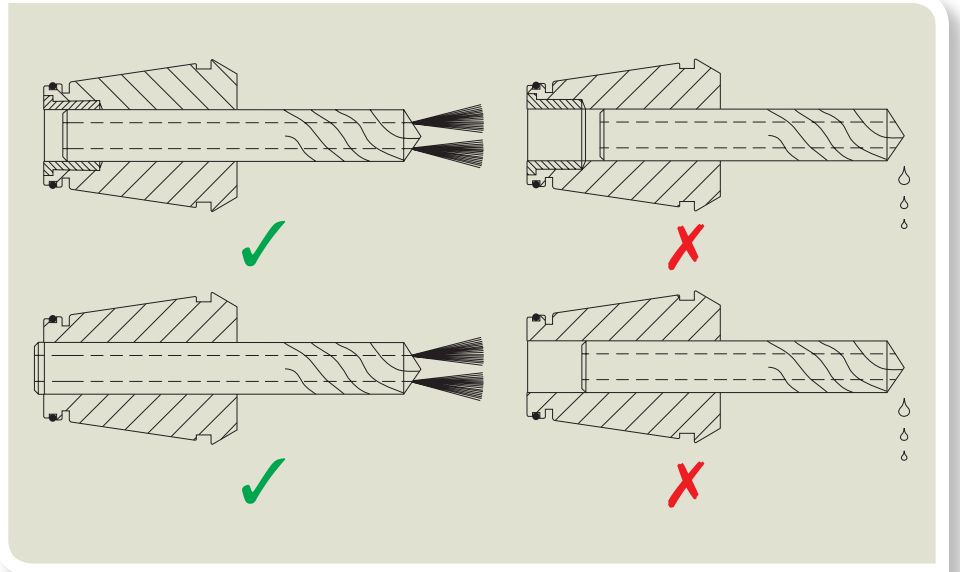
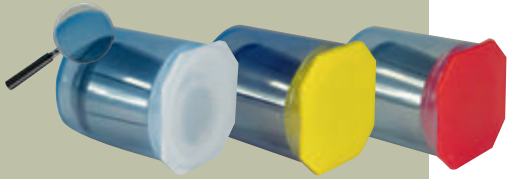
**SIZDIRMAZ ER PENSLER
ER KILAVUZ PENSLERİ
İNÇ ÖLÇÜ ER PENSLER
DIN 6388 / ISO10897-B (OZ25) PENSLER**

COOLANT SEALED ER COLLETS (For internal coolant tools) SIZDIRMAZ ER PENSLER (içten soğutmalı takımlar için)



Coolant Sealed performance is only achieved when clamped the nominal diameter. The shank should be inserted till the back end of the collet as shown in the instruction. May collapse down 0.2mm but will have leakage when holding undersize. Suitable for all kinds of ER collet holders. May also be used as standard ER collet for the nominal diameter cutters without internal coolant. Less flexible with harder structure compared with standard ER collets. Other sizes are available on request.

*Sızdırmaz özelliği sadece kendi çapını sıkıldığında geçerlidir.
Takım sapı pensin arkasına kadar sokulmalıdır.
0.2mm daralma yapabilir, ancak alt ölçüyü sıkarken sızdırır.
Her türlü ER pens tutucusuna uygundur.
Nominal çapta standart pens olarak ta kullanılabilir.
Daha sert gövde yapısıyla standart ER penslere göre daha az esnektir.
Diğer çaplar şipariş yapılabilir.*



COOLANT SEALED ER COLLETS (For internal coolant tools) DIN 6499 / ISO 15488
SIZDIRMAZ ER PENSLELER (içten soğutmalı takımlar için) Pat. Nr. 2012 07739

ERC11 COOLANT SEALED COLLETS
ERC11 SIZDIRMAZ PENSLELER

CLASS 2

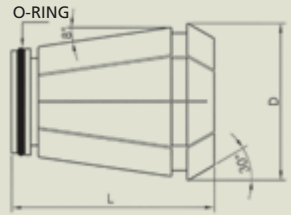
CODE / KOD	clamping dia sıkma çapı Ømm	EURO
ERC110302	3	13.40
ERC110402	4	13.40
ERC110502	5	13.40
ERC110602	6	13.40

CLASS 1

CODE / KOD	clamping dia sıkma çapı Ømm	EURO
ERC110301	3	14.80
ERC110401	4	14.80
ERC110501	5	14.80
ERC110601	6	14.80

TOPAC

CODE / KOD	clamping dia sıkma çapı Ømm	EURO
ERC11030T	3	17.30
ERC11040T	4	17.30
ERC11050T	5	17.30
ERC11060T	6	17.30



ERC11 COOLANT SEALED COLLET SETS
ERC11 SIZDIRMAZ PENS TAKIMLARI

ERC11 COOLANT SEALED COLLET SET CLASS 2

CODE/KOD	content - içeriği	EURO
ERC11SET2	4pcs ERC11 Collant sealed collets Class 2 Ø3-6mm in 1.0mm increment in plastic box 4ad. ERC11 sızdırmaz pens Class 2 Ø3-6mm arası 1.0mm atlamalı plastik kutuda	56.80

ERC11 COOLANT SEALED COLLET SET CLASS 1

CODE/KOD	content - içeriği	EURO
ERC11SET1	4pcs ERC11 Collant sealed collets Class 1 Ø3-6mm in 1.0mm increment in plastic box 4ad. ERC11 sızdırmaz pens Class 1 Ø3-6mm arası 1.0mm atlamalı plastik kutuda	62.40

ERC11 COOLANT SEALED COLLET SET TOPAC

CODE/KOD	content - içeriği	EURO
ERC11SETT	4pcs ERC11 Collant sealed collets TOPAC Ø3-6mm in 1.0mm increment in plastic box 4ad. ERC11 sızdırmaz pens TOPAC Ø3-6mm arası 1.0mm atlamalı plastik kutuda	72.40



ERC16 COOLANT SEALED COLLETS
ERC16 SIZDIRMAZ PENSLELER

CLASS 2

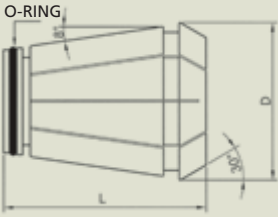
CODE / KOD	clamping dia sıkma çapı Ømm	EURO
ERC160302	3	9.30
ERC160402	4	9.30
ERC160502	5	9.30
ERC160602	6	9.30
ERC160702	7	9.30
ERC160802	8	9.30
ERC160902	9	9.30
ERC161002	10	9.30

CLASS 1

CODE / KOD	clamping dia sıkma çapı Ømm	EURO
ERC160301	3	10.60
ERC160401	4	10.60
ERC160501	5	10.60
ERC160601	6	10.60
ERC160701	7	10.60
ERC160801	8	10.60
ERC160901	9	10.60
ERC161001	10	10.60

TOPAC

CODE / KOD	clamping dia sıkma çapı Ømm	EURO
ERC16030T	3	13.10
ERC16040T	4	13.10
ERC16050T	5	13.10
ERC16060T	6	13.10
ERC16070T	7	13.10
ERC16080T	8	13.10
ERC16090T	9	13.10
ERC16100T	10	13.10



ERC16 COOLANT SEALED COLLET SETS
ERC16 SIZDIRMAZ PENS TAKIMLARI

ERC16 COOLANT SEALED COLLET SET CLASS 2

CODE/KOD	content - içeriği	EURO
ERC16SET2	8pcs ERC16 Collant sealed collets Class 2 Ø3-10mm in 1.0mm increment in plastic box 8ad. ERC16 sızdırmaz pens Class 2 Ø3-10mm arası 1.0mm atlamalı plastik kutuda	77.60

ERC16 COOLANT SEALED COLLET SET CLASS 1

CODE/KOD	content - içeriği	EURO
ERC16SET1	8pcs ERC16 Collant sealed collets Class 1 Ø3-10mm in 1.0mm increment in plastic box 8ad. ERC16 sızdırmaz pens Class 1 Ø3-10mm arası 1.0mm atlamalı plastik kutuda	88.00

ERC16 COOLANT SEALED COLLET SET TOPAC

CODE/KOD	content - içeriği	EURO
ERC16SETT	8pcs ERC16 Collant sealed collets TOPAC Ø3-10mm in 1.0mm increment in plastic box 8ad. ERC16 sızdırmaz pens TOPAC Ø3-10mm arası 1.0mm atlamalı plastik kutuda	108.00

COOLANT SEALED ER COLLETS (For internal coolant tools) DIN 6499 / ISO 15488
SIZDIRMAZ ER PENSLELER (içten soğutmalı takım için) Pat. Nr. 2012 07739

ERC20 COOLANT SEALED COLLETS
ERC20 SIZDIRMAZ PENSLELER

CLASS 2

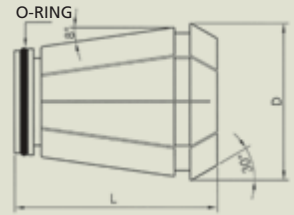
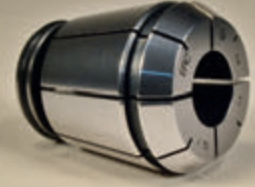
CODE / KOD	clamping dia sıkma çapı Ømm	EURO
ERC200302	3	9.40
ERC200402	4	9.40
ERC200502	5	9.40
ERC200602	6	9.40
ERC200702	7	9.40
ERC200802	8	9.40
ERC200902	9	9.40
ERC201002	10	9.40
ERC201102	11	9.40
ERC201202	12	9.40
ERC201302	13	9.40

CLASS 1

CODE / KOD	clamping dia sıkma çapı Ømm	EURO
ERC200301	3	10.70
ERC200401	4	10.70
ERC200501	5	10.70
ERC200601	6	10.70
ERC200701	7	10.70
ERC200801	8	10.70
ERC200901	9	10.70
ERC201001	10	10.70
ERC201101	11	10.70
ERC201201	12	10.70
ERC201301	13	10.70

TOPAC

CODE / KOD	clamping dia sıkma çapı Ømm	EURO
ERC20030T	3	13.20
ERC20040T	4	13.20
ERC20050T	5	13.20
ERC20060T	6	13.20
ERC20070T	7	13.20
ERC20080T	8	13.20
ERC20090T	9	13.20
ERC20100T	10	13.20
ERC20110T	11	13.20
ERC20120T	12	13.20
ERC20130T	13	13.20



ERC20 COOLANT SEALED COLLET SETS
ERC20 SIZDIRMAZ PENS TAKIMLARI

ERC20 COOLANT SEALED COLLET SET CLASS 2

CODE/KOD	content - içeriği	EURO
ERC20SET2	11pcs ERC20 Collant sealed collets Class 2 Ø3-13mm in 1.0mm increment in plastic box 11ad. ERC20 sızdırmaz pens Class 2 Ø3-13mm arası 1.0mm atlamalı plastik kutuda	106.80

ERC20 COOLANT SEALED COLLET SET CLASS 1

CODE/KOD	content - içeriği	EURO
ERC20SET1	11pcs ERC20 Collant sealed collets Class 1 Ø3-13mm in 1.0mm increment in plastic box 11ad. ERC20 sızdırmaz pens Class 1 Ø3-13mm arası 1.0mm atlamalı plastik kutuda	121.10

ERC20 COOLANT SEALED COLLET SET TOPAC

CODE/KOD	content - içeriği	EURO
ERC20SETT	11pcs ERC20 Collant sealed collets TOPAC Ø3-13mm in 1.0mm increment in plastic box 11ad. ERC20 sızdırmaz pens TOPAC Ø3-13mm arası 1.0mm atlamalı plastik kutuda	148.60



ERC25 COOLANT SEALED COLLETS
ERC25 SIZDIRMAZ PENSLELER

CLASS 2

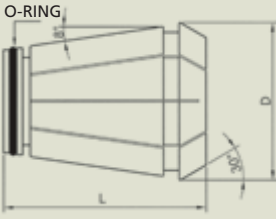
CODE / KOD	clamping dia sıkma çapı Ømm	EURO
ERC250302	3	10.00
ERC250402	4	10.00
ERC250502	5	10.00
ERC250602	6	10.00
ERC250702	7	10.00
ERC250802	8	10.00
ERC250902	9	10.00
ERC251002	10	10.00
ERC251102	11	10.00
ERC251202	12	10.00
ERC251302	13	10.00
ERC251402	14	10.00
ERC251502	15	10.00
ERC251602	16	10.00

CLASS 1

CODE / KOD	clamping dia sıkma çapı Ømm	EURO
ERC250301	3	11.30
ERC250401	4	11.30
ERC250501	5	11.30
ERC250601	6	11.30
ERC250701	7	11.30
ERC250801	8	11.30
ERC250901	9	11.30
ERC251001	10	11.30
ERC251101	11	11.30
ERC251201	12	11.30
ERC251301	13	11.30
ERC251401	14	11.30
ERC251501	15	11.30
ERC251601	16	11.30

TOPAC

CODE / KOD	clamping dia sıkma çapı Ømm	EURO
ERC25030T	3	13.80
ERC25040T	4	13.80
ERC25050T	5	13.80
ERC25060T	6	13.80
ERC25070T	7	13.80
ERC25080T	8	13.80
ERC25090T	9	13.80
ERC25100T	10	13.80
ERC25110T	11	13.80
ERC25120T	12	13.80
ERC25130T	13	13.80
ERC25140T	14	13.80
ERC25150T	15	13.80
ERC25160T	16	13.80



ERC25 COOLANT SEALED COLLET SETS
ERC25 SIZDIRMAZ PENS TAKIMLARI

ERC25 COOLANT SEALED COLLET SET CLASS 2

CODE/KOD	content - içeriği	EURO
ERC25SET2	14pcs ERC25 Coolant sealed collets Class 2 Ø3-16mm in 1.0mm increment in plastic box 14Ad. ERC25 sızdırmaz pens Class 2 Ø3-16mm arası 1.0mm atlamalı plastik kutuda	145.80

ERC25 COOLANT SEALED COLLET SET CLASS 1

CODE/KOD	content - içeriği	EURO
ERC25SET1	14pcs ERC25 Coolant sealed collets Class 1 Ø3-16mm in 1.0mm increment in plastic box 14Ad. ERC25 sızdırmaz pens Class 1 Ø3-16mm arası 1.0mm atlamalı plastik kutuda	164.00

ERC25 COOLANT SEALED COLLET SET TOPAC

CODE/KOD	content - içeriği	EURO
ERC25SETT	14pcs ERC25 Coolant sealed collets TOPAC Ø3-16mm in 1.0mm increment in plastic box 14Ad. ERC25 sızdırmaz pens TOPAC Ø3-16mm arası 1.0mm atlamalı plastik kutuda	199.00

COOLANT SEALED ER COLLETS (For internal coolant tools) DIN 6499 / ISO 15488
SIZDIRMAZ ER PENSLELER (içten soğutmalı takımlar için) Pat. Nr. 2012 07739

ERC32 COOLANT SEALED COLLETS
ERC32 SIZDIRMAZ PENSLELER

CLASS 2

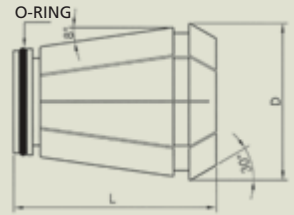
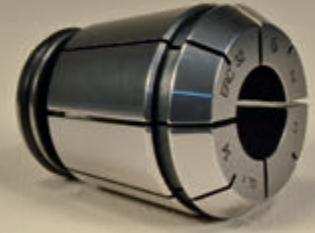
CODE / KOD	clamping dia sıkma çapı Ømm	EURO
ERC320302	3	10.60
ERC320402	4	10.60
ERC320502	5	10.60
ERC320602	6	10.60
ERC320702	7	10.60
ERC320802	8	10.60
ERC320902	9	10.60
ERC321002	10	10.60
ERC321102	11	10.60
ERC321202	12	10.60
ERC321302	13	10.60
ERC321402	14	10.60
ERC321502	15	10.60
ERC321602	16	10.60
ERC321702	17	10.60
ERC321802	18	10.60
ERC321902	19	10.60
ERC322002	20	10.60

CLASS 1

CODE / KOD	clamping dia sıkma çapı Ømm	EURO
ERC320301	3	12.00
ERC320401	4	12.00
ERC320501	5	12.00
ERC320601	6	12.00
ERC320701	7	12.00
ERC320801	8	12.00
ERC320901	9	12.00
ERC321001	10	12.00
ERC321101	11	12.00
ERC321201	12	12.00
ERC321301	13	12.00
ERC321401	14	12.00
ERC321501	15	12.00
ERC321601	16	12.00
ERC321701	17	12.00
ERC321801	18	12.00
ERC321901	19	12.00
ERC322001	20	12.00

TOPAC

CODE / KOD	clamping dia sıkma çapı Ømm	EURO
ERC32030T	3	14.50
ERC32040T	4	14.50
ERC32050T	5	14.50
ERC32060T	6	14.50
ERC32070T	7	14.50
ERC32080T	8	14.50
ERC32090T	9	14.50
ERC32100T	10	14.50
ERC32110T	11	14.50
ERC32120T	12	14.50
ERC32130T	13	14.50
ERC32140T	14	14.50
ERC32150T	15	14.50
ERC32160T	16	14.50
ERC32170T	17	14.50
ERC32180T	18	14.50
ERC32190T	19	14.50
ERC32200T	20	14.50



ERC32 COOLANT SEALED COLLET SETS
ERC32 SIZDIRMAZ PENS TAKIMLARI

ERC32 COOLANT SEALED COLLET SET CLASS 2

CODE/KOD	content - içeriği	EURO
ERC32SET2	18pcs ERC32 Coolant sealed collets Class 2 Ø3-20mm in 1.0mm increment in plastic box 18Ad. ERC32 sızdırmaz pens Class 2 Ø3-20m arası 1.0mm atlamalı plastik kutuda	197.80

ERC32 COOLANT SEALED COLLET SET CLASS 1

CODE/KOD	content - içeriği	EURO
ERC32SET1	18pcs ERC32 Coolant sealed collets Class 1 Ø3-20mm in 1.0mm increment in plastic box 18Ad. ERC32 sızdırmaz pens Class 1 Ø3-20m arası 1.0mm atlamalı plastik kutuda	223.00

ERC32 COOLANT SEALED COLLET SET TOPAC

CODE/KOD	content - içeriği	EURO
ERC32SETT	18pcs ERC32 Coolant sealed collets TOPAC Ø3-20mm in 1.0mm increment in plastic box 18Ad. ERC32 sızdırmaz pens TOPAC Ø3-20m arası 1.0mm atlamalı plastik kutuda	268.00



ERC40 COOLANT SEALED COLLETS
ERC40 SIZDIRMAZ PENSLELER

CLASS 2

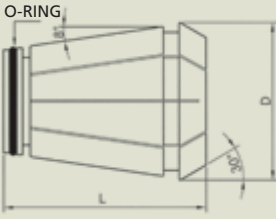
CODE KOD	clamping dia sıkma çapı Ømm	EURO
ERC400302	3	12.60
ERC400402	4	12.60
ERC400502	5	12.60
ERC400602	6	12.60
ERC400702	7	12.60
ERC400802	8	12.60
ERC400902	9	12.60
ERC401002	10	12.60
ERC401102	11	12.60
ERC401202	12	12.60
ERC401302	13	12.60
ERC401402	14	12.60
ERC401502	15	12.60
ERC401602	16	12.60
ERC401702	17	12.60
ERC401802	18	12.60
ERC401902	19	12.60
ERC402002	20	12.60
ERC402102*	21	12.60
ERC402202*	22	12.60
ERC402302*	23	12.60
ERC402402*	24	12.60
ERC402502	25	12.60
ERC402602*	26	12.60

CLASS 1

CODE KOD	clamping dia sıkma çapı Ømm	EURO
ERC400301	3	14.00
ERC400401	4	14.00
ERC400501	5	14.00
ERC400601	6	14.00
ERC400701	7	14.00
ERC400801	8	14.00
ERC400901	9	14.00
ERC401001	10	14.00
ERC401101	11	14.00
ERC401201	12	14.00
ERC401301	13	14.00
ERC401401	14	14.00
ERC401501	15	14.00
ERC401601	16	14.00
ERC401701	17	14.00
ERC401801	18	14.00
ERC401901	19	14.00
ERC402001	20	14.00
ERC402101*	21	14.00
ERC402201*	22	14.00
ERC402301*	23	14.00
ERC402401*	24	14.00
ERC402501	25	14.00
ERC402601*	26	14.00

TOPAC

CODE KOD	clamping dia sıkma çapı Ømm	EURO
ERC40030T	3	16.50
ERC40040T	4	16.50
ERC40050T	5	16.50
ERC40060T	6	16.50
ERC40070T	7	16.50
ERC40080T	8	16.50
ERC40090T	9	16.50
ERC40100T	10	16.50
ERC40110T	11	16.50
ERC40120T	12	16.50
ERC40130T	13	16.50
ERC40140T	14	16.50
ERC40150T	15	16.50
ERC40160T	16	16.50
ERC40170T	17	16.50
ERC40180T	18	16.50
ERC40190T	19	16.50
ERC40200T	20	16.50
ERC40210T*	21	16.50
ERC40220T*	22	16.50
ERC40230T*	23	16.50
ERC40240T*	24	16.50
ERC40250T	25	16.50
ERC40260T*	26	16.50



ERC40 COOLANT SEALED COLLET SETS
ERC40 SIZDIRMAZ PENS TAKIMLARI

ERC40 COOLANT SEALED COLLET SET CLASS 2

CODE/KOD	content - içeriği	EURO
ERC40SET2	19pcs ERC40 Coolant sealed collets Class 2 Ø3-25mm in plastic box 19Ad. ERC40 sızdırmaz pens Class 2 Ø3-25m arası plastik kutuda	251.80

ERC40 COOLANT SEALED COLLET SET CLASS 1

CODE/KOD	content - içeriği	EURO
ERC40SET1	19pcs ERC40 Coolant sealed collets Class 1 Ø3-25mm in plastic box 19Ad. ERC40 sızdırmaz pens Class 1 Ø3-25m arası plastik kutuda	278.40

ERC40 COOLANT SEALED COLLET SET TOPAC

CODE/KOD	content - içeriği	EURO
ERC40SETT	19pcs ERC40 Coolant sealed collets TOPAC Ø3-25mm in plastic box 19Ad. ERC40 sızdırmaz pens TOPAC Ø3-25m arası plastik kutuda	325.90

* These sizes are not included in the sets / * Bu ölçüler setin içinde yoktur.

COOLANT SEALED ER COLLETS (For internal coolant tools) DIN 6499 / ISO 15488
SIZDIRMAZ ER PENSLELER (içten soğutmalı takım için) Pat. Nr. 2012 07739

ERC50 COOLANT SEALED COLLETS
ERC50 SIZDIRMAZ PENSLELER

CLASS 2

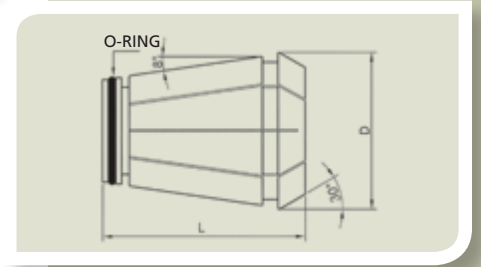
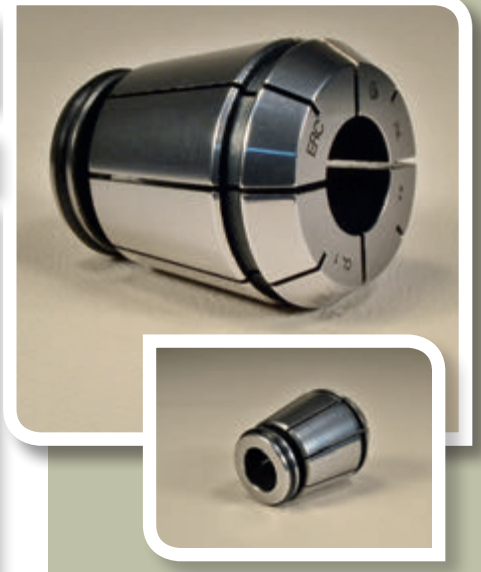
CODE KOD	clamping dia sıkma çapı Ømm	EURO
ERC501202	12	32.00
ERC501402	14	32.00
ERC501602	16	32.00
ERC501802	18	32.00
ERC502002	20	32.00
ERC502502	25	32.00
ERC503202	32	32.00

CLASS 1

CODE KOD	clamping dia sıkma çapı Ømm	EURO
ERC501201	12	34.50
ERC501401	14	34.50
ERC501601	16	34.50
ERC501801	18	34.50
ERC502001	20	34.50
ERC502501	25	34.50
ERC503201	32	34.50

TOPAC

CODE KOD	clamping dia sıkma çapı Ømm	EURO
ERC50120T	12	38.00
ERC50140T	14	38.00
ERC50160T	16	38.00
ERC50180T	18	38.00
ERC50200T	20	38.00
ERC50250T	25	38.00
ERC50320T	32	38.00

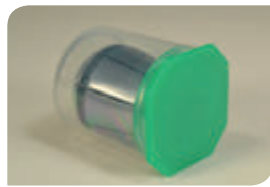


ERT16

CODE / KOD	d1	square size kare ölçüsü □ mm	Tap Specs* - Kılavuz detayı*	EURO
ERT16028	2.8	2.1	DIN371 M2-M2,5 - DIN376 M4	11.00
ERT16035	3.5	2.7	DIN371 M3 - DIN376 M5	11.00
ERT16040	4	3.15/3.2	ISO M4/M5 - JIS M3/M3.5	11.00
ERT16045	4.5	3.4	DIN371 M4 - DIN376 M6	11.00
ERT16050	5	4	ISO M5 - JIS M4	11.00
ERT16055	5.5	4.3	DIN374/376 M7	11.00
ERT16060	6	4.9	DIN371 M4,5/M5/M6 DIN374/376 M8	11.00
ERT16063	6.3	5	ISO M6-M8-1/4"-5/16"	11.00
ERT16070	7	5.5	DIN371 M7 DIN374/376 M9-M10 JIS M9-M10	11.00
ERT16080	8	6.2/6.3	DIN371 M8 ISO M8 - M10 - 7/16" - 5/16"	11.00

ERT 16 TAPPING ER COLLET SET / ERT 16 KILAVUZ PENSi TAKIMI

CODE / KOD	content - içeriği	EURO
ERT16SET	10 pcs ERT16 tapping ER collets, suitable for taps with shank Ø2.8-8.0, in plastic box. 10 adet ERT16 kılavuz pensi, Ø2.8-8.0 saplı kılavuzlara uygun, plastik kutuda	113.20



* Tap specs indicated are some of the suitable sizes only. Tapping ER collets are all made to CL1 (Class 1 - 10 Micron) Precision Standard. They are packed with green cap.

* Belirtilen kılavuz detaylarında uygun ölçülerin sadece bir kısmı belirtilmiştir. Tüm kılavuz pensleri CL1 (Class 1 - 10 Micron) hassasiyet sınıfına göre üretilmiştir. Ambalajları yeşil kapalıdır.

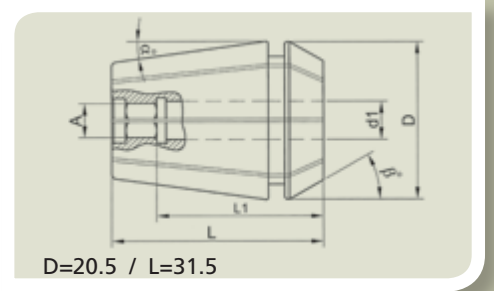
TAPPING ER COLLETS ER KILAVUZ PENSLERİ

DIN 6499 / ISO 15488

ERT20

CODE / KOD	d1	square size kare ölçüsü □ mm	Tap Specs* - Klavuz detayı*	EURO
ERT20035	3.5	2.7	DIN371 M3 - DIN376 M5	11.20
ERT20040	4	3.15/3.2	ISO M4/M5 - JIS M3/M3.5	11.20
ERT20045	4.5	3.4	DIN371 M4 - DIN376 M6	11.20
ERT20050**	5**	4	ISO M5 - JIS M4	11.20
ERT20055	5.5	4.3	DIN374/376 M7	11.20
ERT20060	6	4.9	DIN371 M4,5/M5/M6 DIN374/376 M8	11.20
ERT20063	6.3	5	ISO M6-M8-1/4"-5/16"	11.20
ERT20070	7	5.5	DIN371 M7 DIN374/376 M9-M10 JIS M9-M10	11.20
ERT20080	8	6.2/6.3	DIN371 M8 ISO M8 - M10 - 7/16" - 5/16"	11.20
ERT20090	9	7.0/7.1	DIN 374/376 M12 ISO M12 - 1/2"	11.20
ERT20100	10	8	DIN371 M10 ISO M10 - 3/8"	11.20
ERT20110	11	9	DIN 374/376 M14 - 9/16"	11.20
ERT20120	12	9	DIN 374/376 M16 - 5/8"	11.20

** This item is not included in the set / Bu ürün setin içinde yoktur .



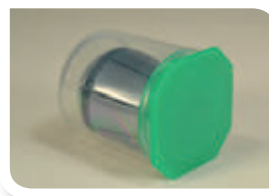
ERT 20 TAPPING ER COLLET SET / ERT 20 KILAVUZ PENSI TAKIMI

CODE / KOD	content - içeriği	EURO
ERT20SET	12 pcs ERT20 tapping ER collets, suitable for taps with shank Ø3.5-12.0, in plastic box 12 adet ERT20 kılavuz pensi, Ø3.5-12.0 saplı kılavuzlara uygun, plastik kutuda	137.80



* Tap specs indicated are some of the suitable sizes only.
Tapping ER collets are all made to CL1 (Class 1 - 10 Micron) Precision Standard.
They are packed with green cap.

* Belirtilen kılavuz detaylarında uygun ölçülerin sadece bir kısmı belirtilmiştir.
Tüm kılavuz pensleri CL1 (Class 1 - 10 Micron) hassasiyet sınıfına göre üretilmiştir.
Ambalajları yeşil kapaklıdır.



ERT25

CODE / KOD	d1	square size kare ölçüsü □ mm	Tap Specs* - Klavuz detayı*	EURO
ERT25035	3.5	2.7	DIN371 M3 - DIN376 M5	11.50
ERT25040	4	3.15/3.2	ISO M4/M5 - JIS M3/M3.5	11.50
ERT25045	4.5	3.4	DIN371 M4 - DIN376 M6	11.50
ERT25050	5	4	ISO M5 - JIS M4	11.50
ERT25055	5.5	4.3	DIN374/376 M7	11.50
ERT25060	6	4.9	DIN371 M4,5/M5/M6 DIN374/376 M8	11.50
ERT25063	6.3	5	ISO M6-M8-1/4" -5/16"	11.50
ERT25070	7	5.5	DIN371 M7 DIN374/376 M9-M10 JIS M9-M10	11.50
ERT25080	8	6.2/6.3	DIN371 M8 ISO M8 - M10 - 7/16" - 5/16"	11.50
ERT25090	9	7.0/7.1	DIN 374/376 M12 ISO M12 - 1/2"	11.50
ERT25100	10	8	DIN371 M10 ISO M10 - 3/8"	11.50
ERT25110	11	9	DIN 374/376 M14 - 9/16"	11.50
ERT25120	12	9	DIN 374/376 M16 - 5/8"	11.50
ERT25125**	12.5	10	ISO M16 - 5/8" JIS M16	11.50
ERT25140	14	11.0/11.2	DIN 374/376 M18 - JIS M18 ISO M18/M20 3/4"	11.50
ERT25160	16	12	DIN 374/376 M20	11.50

** This item is not included in the set / Bu ürün setin içinde yoktur

ERT 25 TAPPING ER COLLET SET / ERT 25 KILAVUZ PENSi TAKIMI

CODE / KOD	content - içeriği	EURO
ERT25SET	15 pcs ERT25 tapping ER collets, suitable for taps with shank Ø3.5-16.0, in plastic box 15 adet ERT25 klavuz pensi, Ø3.5-16.0 saplı klavuzlara uygun, plastik kutuda	178.30



* Tap specs indicated are some of the suitable sizes only. Tapping ER collets are all made to CL1 (Class 1 - 10 Micron) Precision Standard. They are packed with green cap.

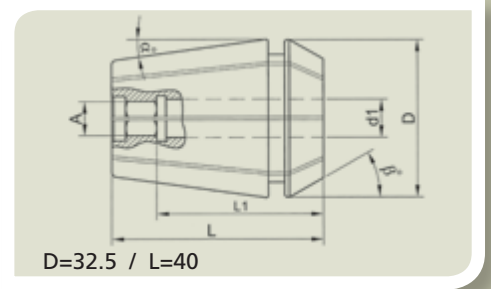
* Belirtilen klavuz detaylarında uygun ölçülerin sadece bir kısmı belirtilmiştir. Tüm klavuz pensleri CL1 (Class 1 - 10 Micron) hassasiyet sınıfına göre üretilmiştir. Ambalajları yeşil kapalıdır.

TAPPING ER COLLETS ER KILAVUZ PENSLERİ

DIN 6499 / ISO 15488

ERT32

CODE / KOD	d1	square size kare ölçüsü □ mm	Tap Specs* - Klavuz detayı*	EURO
ERT32035	3.5	2.7	DIN371 M3 - DIN376 M5	12.60
ERT32040	4	3.15/3.2	ISO M4/M5 - JIS M3/M3.5	12.60
ERT32045	4.5	3.4	DIN371 M4 - DIN376 M6	12.60
ERT32050	5	4	ISO M5 - JIS M4	12.60
ERT32055	5.5	4.3	DIN374/376 M7	12.60
ERT32060	6	4.9	DIN371 M4,5/M5/M6 DIN374/376 M8	12.60
ERT32063	6.3	5	ISO M6-M8-1/4" -5/16"	12.60
ERT32070	7	5.5	DIN371 M7 DIN374/376 M9-M10 JIS M9-M10	12.60
ERT32080	8	6.2/6.3	DIN371 M8 ISO M8 - M10 - 7/16" - 5/16"	12.60
ERT32090	9	7.0/7.1	DIN 374/376 M12 ISO M12 - 1/2"	12.60
ERT32100	10	8	DIN371 M10 ISO M10 - 3/8"	12.60
ERT32110	11	9	DIN 374/376 M14 - 9/16"	12.60
ERT32120	12	9	DIN 374/376 M16 - 5/8"	12.60
ERT32125	12.5	10	ISO M16 - 5/8" JIS M16	12.60
ERT32140	14	11.0/11.2	DIN 374/376 M18 - JIS M18 ISO M18-M20 3/4"	12.60
ERT32160	16	12	DIN 374/376 M20	12.60
ERT32180	18	14.0/14.5	DIN 374/376 M22- M24 -7/8" ISO M24 - 1"	12.60
ERT32200	20	16	DIN 374/376 M27 - 1" ISO M27-M30 - 1 1/8"	12.60



ERT 32 TAPPING ER COLLET SET / ERT 32 KILAVUZ PENSI TAKIMI

CODE / KOD	content - içeriği	EURO
ERT32SET	18 pcs ERT32 tapping ER collets, suitable for taps with shank Ø3.5-20.0, in plastic box 18 adet ERT32 kılavuz pensi, Ø3.5-20.0 saplı kılavuzlara uygun, plastik kutuda	233.80



* Tap specs indicated are some of the suitable sizes only.
Tapping ER collets are all made to CL1 (Class 1 - 10 Micron) Precision Standard.
They are packed with green cap.

* Belirtilen kılavuz detaylarında uygun ölçülerin sadece bir kısmı belirtilmiştir.
Tüm kılavuz pensleri CL1 (Class 1 - 10 Micron) hassasiyet sınıfına göre üretilmiştir.
Ambalajları yeşil kapaklıdır.



ERT40

CODE / KOD	d1	square size kare ölçüsü □ mm	Tap Specs* - Klavuz detayı*	EURO
ERT40040	4	3.15/3.2	ISO M4/M5 - JIS M3/M3.5	14.40
ERT40045	4.5	3.4	DIN371 M4 - DIN376 M6	14.40
ERT40050	5	4	ISO M5 - JIS M4	14.40
ERT40055	5.5	4.3	DIN374/376 M7	14.40
ERT40060	6	4.9	DIN371 M4,5/M5/M6 DIN374/376 M8	14.40
ERT40063	6.3	5	ISO M6-M8-1/4"-5/16"	14.40
ERT40070	7	5.5	DIN371 M7 DIN374/376 M9-M10 JIS M9-M10	14.40
ERT40080	8	6.2/6.3	DIN371 M8 ISO M8 - M10 - 7/16 - 5/16"	14.40
ERT40090	9	7.0/7.1	DIN 374/376 M12 ISO M12 - 1/2"	14.40
ERT40100	10	8	DIN371 M10 ISO M10 - 3/8"	14.40
ERT40110	11	9	DIN 374/376 M14 - 9/16"	14.40
ERT40120	12	9	DIN 374/376 M16 - 5/8"	14.40
ERT40125	12.5	10	ISO M16 - 5/8 JIS M16	14.40
ERT40140	14	11.0/11.2	DIN 374/376 M18 - JIS M18 ISO M18/M20 3/4"	14.40
ERT40160	16	12	DIN 374/376 M20	14.40
ERT40180	18	14.0/14.5	DIN 374/376 M22- M24 - 7/8" ISO M24 - 1"	14.40
ERT40200	20	16	DIN 374/376 M27 - 1" ISO M27-M30 - 1 1/8"	14.40
ERT40220	22	18	DIN 374/376 M30 - 1 1/8"	14.40
ERT40250	25	20	DIN 374/376 M33 - 1 1/4" ISO M36	14.40

ERT 40 TAPPING ER COLLET SET / ERT 40 KILAVUZ PENSi TAKIMI

CODE / KOD	content - içeriği	EURO
ERT40SET	19 pcs ERT40 tapping ER collets, suitable for taps with shank Ø4.0-25.0, in plastic box 19 adet ERT40 kılavuz pensi, Ø4.0-25.0 saplı kılavuzlara uygun, plastik kutuda	286.00



* Tap specs indicated are some of the suitable sizes only. Tapping ER collets are all made to CL1 (Class 1 - 10 Micron) Precision Standard. They are packed with green cap.

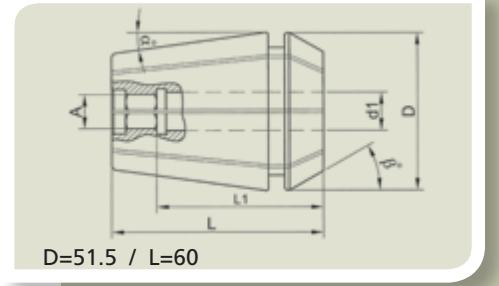
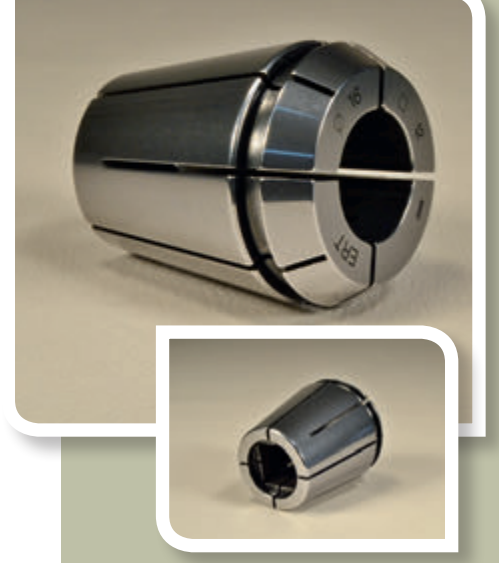
* Belirtilen kılavuz detaylarında uygun ölçülerin sadece bir kısmı belirtilmiştir. Tüm kılavuz pensleri CL1 (Class 1 - 10 Micron) hassasiyet sınıfına göre üretilmiştir. Ambalajları yeşil kapalıdır.

TAPPING ER COLLETS ER KILAVUZ PENSLERİ

DIN 6499 / ISO 15488

ERT50

CODE / KOD	d1	square size kare ölçüsü □ mm	Tap Specs* - Klavuz detayı*	EURO
ERT50160	16	12	DIN 374/376 M20	32.00
ERT50180	18	14.0/14.5	DIN 374/376 M22- M24 -7/8" ISO M24 - 1"	32.00
ERT50200	20	16	DIN 374/376 M27 - 1" ISO M27-M30 - 1 1/8"	32.00
ERT50220	22	18	DIN 374/376 M30 - 1 1/8"	32.00
ERT50250	25	20	DIN 374/376 M33 - 1 1/4" ISO M36	32.00
ERT50280	28	22	DIN 374/376 M36 - 1 3/8" -1 1/2"	32.00
ERT50320	32	24	DIN 374/376 M39-M42 - 1 1/2"	32.00



* Tap specs indicated are some of the suitable sizes only.
Tapping ER collets are all made to CL1 (Class 1 - 10 Micron) Precision Standard.
They are packed with green cap.

* Belirtilen klavuz detaylarında uygun ölçülerin sadece bir kısmı belirtilmiştir.
Tüm klavuz pensleri CL1 (Class 1 - 10 Micron) hassasiyet sınıfına göre üretilmiştir.
Ambalajları yeşil kapaklıdır.



ERTC COOLANT SEALED TAPPING COLLETS For internal coolant taps ERTC SIZDIRMAZ KILAVUZ PENSLERİ İçten soğutmalı kılavuzlar için

DIN 6499 / ISO 15488 / Pat. Nr. 2012 07739

ERTC16

CODE / KOD	d1	square size kare ölçüsü □ mm	Tap Specs* - Klavuz detayı*	EURO
ERTC16045	4.5	3.4	DIN371 M4 - DIN376 M6	18.90
ERTC16060	6	4.9	DIN371 M4,5/M5/M6 DIN374/376 M8	18.90
ERTC16080	8	6.2/6.3	DIN371 M8 ISO M8 - M10 - 7/16" - 5/16"	18.90

ERTC20

CODE / KOD	d1	square size kare ölçüsü □ mm	Tap Specs* - Klavuz detayı*	EURO
ERTC20045	4.5	3.4	DIN371 M4 - DIN376 M6	19.10
ERTC20060	6	4.9	DIN371 M4,5/M5/M6 DIN374/376 M8	19.10
ERTC20080	8	6.2/6.3	DIN371 M8 ISO M8 - M10 - 7/16" - 5/16"	19.10
ERTC20090	9	7.0/7.1	DIN 374/376 M12 ISO M12 - 1/2"	19.10
ERTC20100	10	8	DIN371 M10 ISO M10 - 3/8"	19.10
ERTC20110	11	9	DIN 374/376 M14 - 9/16"	19.10
ERTC20120	12	9	DIN 374/376 M16 - 5/8"	19.10

ERTC25

CODE / KOD	d1	square size kare ölçüsü □ mm	Tap Specs* - Klavuz detayı*	EURO
ERTC25060	6	4.9	DIN371 M4,5/M5/M6 DIN374/376 M8	19.80
ERTC25080	8	6.2/6.3	DIN371 M8 ISO M8 - M10 - 7/16" - 5/16"	19.80
ERTC25090	9	7.0/7.1	DIN 374/376 M12 ISO M12 - 1/2"	19.80
ERTC25100	10	8	DIN371 M10 ISO M10 - 3/8"	19.80
ERTC25110	11	9	DIN 374/376 M14 - 9/16"	19.80
ERTC25120	12	9	DIN 374/376 M16 - 5/8"	19.80
ERTC25140	14	11.0/11.2	DIN 374/376 M18 - JIS M18 ISO M18/M20 3/4"	19.80
ERTC25160	16	12	DIN 374/376 M20	19.80

* Tap specs indicated are some of the suitable sizes only.
Coolant sealed Tapping ER collets are all made to CL1 (Class 1 - 10 Micron) Precision Standard They are packed with green cap and the body is transparent blue

* Belirtilen kılavuz detaylarında uygun ölçülerin sadece bir kısmı belirtilmiştir
Tüm sızdırmaz kılavuz pensleri CL1 (Class 1 - 10 Micron) hassasiyet sınıfına göre üretilmiştir.
Ambalajlarının kapağı yeşil, gövdesi saydam mavidir.



ERTC COOLANT SEALED TAPPING COLLETS For internal coolant taps ERTC SIZDIRMAZ KILAVUZ PENSLERİ İçten soğutmalı kılavuzlar için

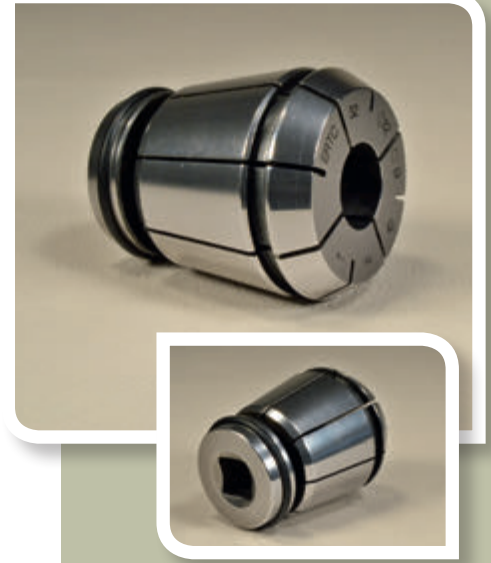
DIN 6499 / ISO 15488 / Pat. Nr. 2012 07739

ERTC32

CODE / KOD	d1	square size kare ölçüsü □ mm	Tap Specs* - Klavuz detayı*	EURO
ERTC32060	6	4.9	DIN371 M4,5/M5/M6 DIN374/376 M8	21.00
ERTC32080	8	6.2/6.3	DIN371 M8 ISO M8 - M10 - 7/16" - 5/16"	21.00
ERTC32090	9	7.0/7.1	DIN 374/376 M12 ISO M12 - 1/2"	21.00
ERTC32100	10	8	DIN371 M10 ISO M10 - 3/8"	21.00
ERTC32110	11	9	DIN 374/376 M14 - 9/16"	21.00
ERTC32120	12	9	DIN 374/376 M16 - 5/8"	21.00
ERTC32140	14	11.0/11.2	DIN 374/376 M18 - JIS M18 ISO M18-M20 3/4"	21.00
ERTC32160	16	12	DIN 374/376 M20	21.00
ERTC32180	18	14.0/14.5	DIN 374/376 M22- M24 - 7/8" ISO M24 - 1"	21.00
ERTC32200	20	16	DIN 374/376 M27 - 1" ISO M27-M30 - 1 1/8"	21.00

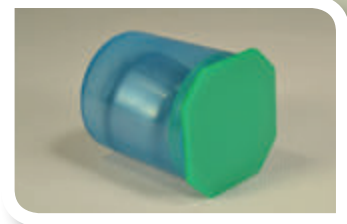
ERTC40

CODE / KOD	d1	square size kare ölçüsü □ mm	Tap Specs* - Klavuz detayı*	EURO
ERTC40060	6	4.9	DIN371 M4,5/M5/M6 DIN374/376 M8	23.60
ERTC40080	8	6.2/6.3	DIN371 M8 ISO M8 - M10 - 7/16" - 5/16"	23.60
ERTC40090	9	7.0/7.1	DIN 374/376 M12 ISO M12 - 1/2"	23.60
ERTC40100	10	8	DIN371 M10 ISO M10 - 3/8"	23.60
ERTC40110	11	9	DIN 374/376 M14 - 9/16"	23.60
ERTC40120	12	9	DIN 374/376 M16 - 5/8"	23.60
ERTC40140	14	11.0/11.2	DIN 374/376 M18 - JIS M18 ISO M18-M20 3/4"	23.60
ERTC40160	16	12	DIN 374/376 M20	23.60
ERTC40180	18	14.0/14.5	DIN 374/376 M22- M24 - 7/8" ISO M24 - 1"	23.60
ERTC40200	20	16	DIN 374/376 M27 - 1" ISO M27-M30 - 1 1/8"	23.60
ERTC40220	22	18	DIN 374/376 M30 - 1 1/8"	23.60
ERTC40250	25	20	DIN 374/376 M33 - 1 1/4" ISO M36	23.60



* Tap specs indicated are some of the suitable sizes only.
Coolant sealed Tapping ER collets are all made to CL1 (Class 1 - 10 Micron) Precision Standard They are packed with green cap and the body is transparent blue

* Belirtilen kılavuz detaylarında uygun ölçülerin sadece bir kısmı belirtilmiştir
Tüm sızdırmaz kılavuz pensleri CL1 (Class 1 - 10 Micron) hassasiyet sınıfına göre üretilmiştir. Ambalajlarının kapağı yeşil, gövdesi saydam mavidir.



INCH SIZED ER COLLETS İNÇ ÖLÇÜ ER PENSLER

DIN 6499 / ISO 15488-B

ER8 INCH SIZED COLLETS / ER8 İNÇ ÖLÇÜ PENSLER

ER8	CLASS 2		CLASS 1		TOPAC	
	CODE / KOD	EURO	CODE / KOD	EURO	CODE / KOD	EURO
clamping dia sıkma çapı Ømm						
1/16"	ER0801592	7.40	ER0801591	8.80	ER080159T	12.80
1/8"	ER0803182	5.10	ER0803181	6.20	ER080318T	8.40
3/16"	ER0804762	5.10	ER0804761	6.20	ER080476T	8.40

ER11 INCH SIZED COLLETS / ER11 İNÇ ÖLÇÜ PENSLER

ER11	CLASS 2		CLASS 1		TOPAC	
	CODE / KOD	EURO	CODE / KOD	EURO	CODE / KOD	EURO
clamping dia sıkma çapı Ømm						
1/16"	ER1101592	6.90	ER1101591	8.10	ER110159T	12.10
1/8"	ER1103182	4.50	ER1103181	5.50	ER110318T	7.70
3/16"	ER1104762	4.50	ER1104761	5.50	ER110476T	7.70
1/4"	ER1106352	4.50	ER1106351	5.50	ER110635T	7.70

INCH SIZED ER COLLETS İNÇ ÖLÇÜ ER PENSLELER

DIN 6499 / ISO 15488-B

ER16 INCH SIZED COLLETS / ER16 İNÇ ÖLÇÜ PENSLELER

ER16	CLASS 2		CLASS 1		TOPAC	
	CODE / KOD	EURO	CODE / KOD	EURO	CODE / KOD	EURO
clamping dia sıkma çapı Ømm						
1/16"	ER1601592	5.50	ER1601591	7.20	ER160159T	11.00
1/8"	ER1603182	3.60	ER1603181	4.90	ER160318T	6.80
3/16"	ER1604762	3.60	ER1604761	4.90	ER160476T	6.80
1/4"	ER1606352	3.60	ER1606351	4.90	ER160635T	6.80
5/16"	ER1607942	3.60	ER1607941	4.90	ER160794T	6.80
3/8"	ER1609532	3.60	ER1609531	4.90	ER160953T	6.80



ER16 INCH SIZED COLLETS SETS / ER16 İNÇ ÖLÇÜ PENS TAKIMLARI

ER16 INCH COLLET SET CLASS 2

CODE/KOD	content - içeriği	EURO
ER16SETIN2	6pcs ER16 Inch sized collets Class 2 Ø1/16"-3/8" in plastic box 6Ad. ER16 İnç ölçü pens Class 2 Ø1/16"-3/8" arası plastik kutuda	26.70

ER16 INCH COLLET SET CLASS 1

CODE/KOD	content - içeriği	EURO
ER16SETIN1	6pcs ER16 Inch sized collets Class 1 Ø1/16"-3/8" in plastic box 6Ad. ER16 İnç ölçü pens Class 1 Ø1/16"-3/8" arası plastik kutuda	34.90

ER16 INCH COLLET SET TOPAC (5 micron)

CODE/KOD	content - içeriği	EURO
ER16SETINT	6pcs ER16 Inch sized collets TOPAC Ø1/16"-3/8" in plastic box 6Ad. ER16 İnç ölçü pens TOPAC Ø1/16"-3/8" arası plastik kutuda	48.20



ER20 INCH SIZED COLLETS / ER20 İNÇ ÖLÇÜ PENSLER

ER20	CLASS 2		CLASS 1		TOPAC	
	CODE / KOD	EURO	CODE / KOD	EURO	CODE / KOD	EURO
clamping dia sıkma çapı Ømm						
1/16"	ER2001592	5.80	ER2001591	7.50	ER200159T	11.30
1/8"	ER2003182	3.80	ER2003181	5.20	ER200318T	7.00
3/16"	ER2004762	3.80	ER2004761	5.20	ER200476T	7.00
1/4"	ER2006352	3.80	ER2006351	5.20	ER200635T	7.00
5/16"	ER2007942	3.80	ER2007941	5.20	ER200794T	7.00
3/8"	ER2009532	3.80	ER2009531	5.20	ER200953T	7.00
7/16"	ER2011112	3.80	ER2011111	5.20	ER201111T	7.00
1/2"	ER2012702	3.80	ER2012701	5.20	ER201270T	7.00

ER20 INCH SIZED COLLETS SETS / ER20 İNÇ ÖLÇÜ PENS TAKIMLARI

ER20 INCH COLLET SET CLASS 2

CODE/KOD	content - içeriği	EURO
ER20SETIN2	8pcs ER20 Inch sized collets Class 2 Ø1/16"-1/2" in plastic box 8Ad. ER20 İnç ölçü pens Class 2 Ø1/16"-1/2" arası plastik kutuda	35.80

ER20 INCH COLLET SET CLASS 1

CODE/KOD	content - içeriği	EURO
ER20SETIN1	8pcs ER20 Inch sized collets Class 1 Ø1/16"-1/2" in plastic box 8Ad. ER20 İnç ölçü pens Class 1 Ø1/16"-1/2" arası plastik kutuda	47.30

ER20 INCH COLLET SET TOPAC (5 micron)

CODE/KOD	content - içeriği	EURO
ER20SETINT	8pcs ER20 Inch sized collets TOPAC Ø1/16"-1/2" in plastic box 8Ad. ER20 İnç ölçü pens TOPAC Ø1/16"-1/2" arası plastik kutuda	63.70

INCH SIZED ER COLLETS İNÇ ÖLÇÜ ER PENSLER

DIN 6499 / ISO 15488-B

ER25 INCH SIZED COLLETS / ER25 İNÇ ÖLÇÜ PENSLER

ER25	CLASS 2		CLASS 1		TOPAC	
	CODE / KOD	EURO	CODE / KOD	EURO	CODE / KOD	EURO
clamping dia sıkma çapı Ømm						
1/16"	ER2501592	6.80	ER2501591	8.50	ER250159T	12.30
1/8"	ER2503182	4.10	ER2503181	5.50	ER250318T	7.30
3/16"	ER2504762	4.10	ER2504761	5.50	ER250476T	7.30
1/4"	ER2506352	4.10	ER2506351	5.50	ER250635T	7.30
5/16"	ER2507942	4.10	ER2507941	5.50	ER250794T	7.30
3/8"	ER2509532	4.10	ER2509531	5.50	ER250953T	7.30
7/16"	ER2511112	4.10	ER2511111	5.50	ER251111T	7.30
1/2"	ER2512702	4.10	ER2512701	5.50	ER251270T	7.30
9/16"	ER2514292	4.10	ER2514291	5.50	ER251429T	7.30
5/8"	ER2515882	4.10	ER2515881	5.50	ER251588T	7.30



ER25 INCH SIZED COLLETS SETS / ER25 İNÇ ÖLÇÜ PENS TAKIMLARI

ER25 INCH COLLET SET CLASS 2

CODE/KOD	content - içeriği	EURO
ER25SETIN2	10pcs ER25 Inch sized collets Class 2 Ø1/16"-5/8" in plastic box 10Ad. ER25 İnc ölçü pens Class 2 Ø1/16"-5/8" arası plastik kutuda	49.50

ER25 INCH COLLET SET CLASS 1

CODE/KOD	content - içeriği	EURO
ER25SETIN1	10pcs ER25 Inch sized collets Class 1 Ø1/16"-5/8" in plastic box 10Ad. ER25 İnc ölçü pens Class 1 Ø1/16"-5/8" arası plastik kutuda	63.80

ER25 INCH COLLET SET TOPAC (5 micron)

CODE/KOD	content - içeriği	EURO
ER25SETINT	10pcs ER25 Inch sized collets TOPAC Ø1/16"-5/8" in plastic box 10Ad. ER25 İnc ölçü pens TOPAC Ø1/16"-5/8" arası plastik kutuda	83.80



ER32 INCH SIZED COLLETS / ER32 İNÇ ÖLÇÜ PENSLER

ER32	CLASS 2		CLASS 1		TOPAC	
	CODE / KOD	EURO	CODE / KOD	EURO	CODE / KOD	EURO
clamping dia sıkma çapı Ømm						
1/8"	ER3203182	4.30	ER3203181	5.90	ER320318T	7.60
3/16"	ER3204762	4.30	ER3204761	5.90	ER320476T	7.60
1/4"	ER3206352	4.30	ER3206351	5.90	ER320635T	7.60
5/16"	ER3207942	4.30	ER3207941	5.90	ER320794T	7.60
3/8"	ER3209532	4.30	ER3209531	5.90	ER320953T	7.60
7/16"	ER3211112	4.30	ER3211111	5.90	ER321111T	7.60
1/2"	ER3212702	4.30	ER3212701	5.90	ER321270T	7.60
9/16"	ER3214292	4.30	ER3214291	5.90	ER321429T	7.60
5/8"	ER3215882	4.30	ER3215881	5.90	ER321588T	7.60
11/16"	ER3217462	4.30	ER3217461	5.90	ER321746T	7.60
3/4"	ER3219052	4.30	ER3219051	5.90	ER321905T	7.60

ER32 INCH SIZED COLLETS SETS / ER32 İNÇ ÖLÇÜ PENS TAKIMLARI

ER32 INCH COLLET SET CLASS 2

CODE/KOD	content - içeriği	EURO
ER32SETIN2	11pcs ER32 Inch sized collets Class 2 Ø1/8"-3/4" in plastic box 11Ad. ER32 İnç ölçü pens Class 2 Ø1/8"-3/4" arası plastik kutuda	54.30

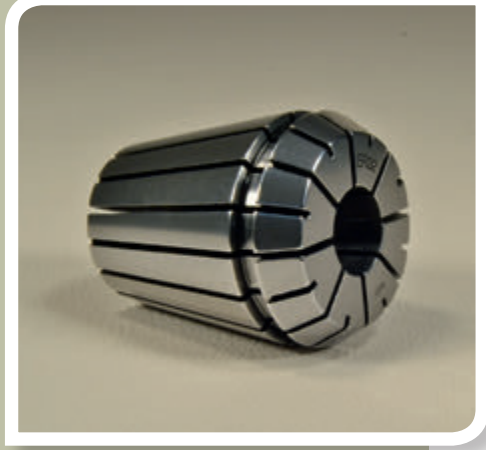
ER32 INCH COLLET SET CLASS 1

CODE/KOD	content - içeriği	EURO
ER32SETIN1	11pcs ER32 Inch sized collets Class 1 Ø1/8"-3/4" in plastic box 11Ad. ER32 İnç ölçü pens Class 1 Ø1/8"-3/4" arası plastik kutuda	71.90

ER32 INCH COLLET SET TOPAC (5 micron)

CODE/KOD	content - içeriği	EURO
ER32SETINT	11pcs ER32 Inch sized collets TOPAC Ø1/8"-3/4" in plastic box 11Ad. ER32 İnç ölçü pens TOPAC Ø1/8"-3/4" arası plastik kutuda	90.60

Other inch sized collets are available on request / Diğer inç ölçü pensler siparişe yapılabilir.

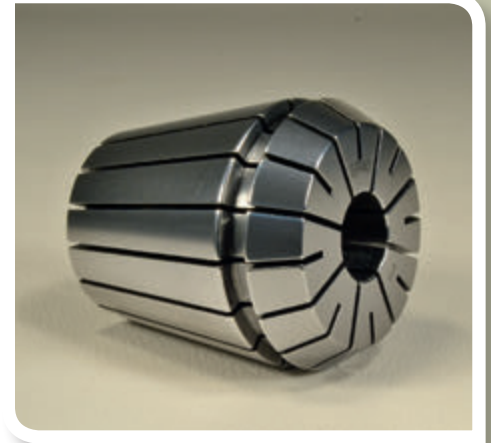


INCH SIZED ER COLLETS İNÇ ÖLÇÜ ER PENSLELER

DIN 6499 / ISO 15488-B

ER40 INCH SIZED COLLETS / ER40 İNÇ ÖLÇÜ PENSLELER

ER40	CLASS 2		CLASS 1		TOPAC	
	CODE / KOD	EURO	CODE / KOD	EURO	CODE / KOD	EURO
clamping dia sıkma çapı Ømm						
1/8"	ER4003182	7.10	ER4003181	8.90	ER400318T	10.80
5/32"***	ER4003972	5.30	ER4003971	7.20	ER400397T	9.10
3/16"	ER4004762	5.30	ER4004761	7.20	ER400476T	9.10
7/32"***	ER4005562	5.30	ER4005561	7.20	ER400556T	9.10
1/4"	ER4006352	5.30	ER4006351	7.20	ER400635T	9.10
9/32"***	ER4007142	5.30	ER4007141	7.20	ER400714T	9.10
5/16"	ER4007942	5.30	ER4007941	7.20	ER400794T	9.10
11/32"***	ER4008732	5.30	ER4008731	7.20	ER400873T	9.10
3/8"	ER4009532	5.30	ER4009531	7.20	ER400953T	9.10
13/32"***	ER4010322	5.30	ER4010321	7.20	ER401032T	9.10
7/16"	ER4011112	5.30	ER4011111	7.20	ER401111T	9.10
15/32"***	ER4011912	5.30	ER4011911	7.20	ER401191T	9.10
1/2"	ER4012702	5.30	ER4012701	7.20	ER401270T	9.10
17/32"***	ER4013492	5.30	ER4013491	7.20	ER401349T	9.10
9/16"	ER4014292	5.30	ER4014291	7.20	ER401429T	9.10
19/32"***	ER4015082	5.30	ER4015081	7.20	ER401508T	9.10
5/8"	ER4015882	5.30	ER4015881	7.20	ER401588T	9.10
21/32"***	ER4016672	5.30	ER4016671	7.20	ER401667T	9.10
11/16"	ER4017462	5.30	ER4017461	7.20	ER401746T	9.10
23/32"***	ER4018262	5.30	ER4018261	7.20	ER401826T	9.10
3/4"	ER4019052	5.30	ER4019051	7.20	ER401905T	9.10
13/16"	ER4020642	5.30	ER4020641	7.20	ER402064T	9.10
7/8"	ER4022232	5.30	ER4022231	7.20	ER402223T	9.10
15/16"	ER4023812	5.30	ER4023811	7.20	ER402381T	9.10
1"	ER4025402	5.30	ER4025401	7.20	ER402540T	9.10



ER40 INCH SIZED COLLETS SETS / ER40 İNÇ ÖLÇÜ PENS TAKIMLARI

ER40 INCH COLLET SET CLASS 2

CODE/KOD	content - içeriği	EURO
ER40SETIN2	15pcs ER40 Inch sized collets Class 2 Ø1/8"-1" in plastic box 15Ad. ER40 İnce ölçü pens Class 2 Ø1/8"-1" arası plastik kutuda	94.00

ER40 INCH COLLET SET CLASS 1

CODE/KOD	content - içeriği	EURO
ER40SETIN1	15pcs ER40 Inch sized collets Class 1 Ø1/8"-1" in plastic box 15Ad. ER40 İnce ölçü pens Class 1 Ø1/8"-1" arası plastik kutuda	122.10

ER40 INCH COLLET SET TOPAC (5 micron)

CODE/KOD	content - içeriği	EURO
ER40SETINT	15pcs ER40 Inch sized collets TOPAC Ø1/8"-1" in plastic box 15Ad. ER40 İnce ölçü pens TOPAC Ø1/8"-1" arası plastik kutuda	150.60



** indicated size collets are not included in the sets / İşaretili ölçü pensler setin içinde yoktur.
Other inch sized collets are available on request / Diğer ince ölçü pensler siparişe yapılabilir.

INCH SIZED COOLANT SEALED ER COLLETS for internal coolant tools
İNÇ ÖLÇÜ SIZDIRMAZ PESLER İçten soğutmalı takımlar için

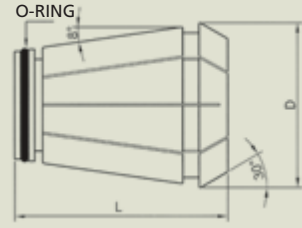
DIN 6499 / ISO 15488

Pat. Nr. 2012 07739

ERC16	CLASS 2		CLASS 1		TOPAC	
	CODE / KOD	EURO	CODE / KOD	EURO	CODE / KOD	EURO
clamping dia sıkma çapı Ømm						
1/8"	ERC1603182	10.40	ERC1603181	11.70	ERC160318T	14.20
1/4"	ERC1606352	10.40	ERC1606351	11.70	ERC160635T	14.20
5/16"	ERC1607942	10.40	ERC1607941	11.70	ERC160794T	14.20
3/8"	ERC1609532	10.40	ERC1609531	11.70	ERC160953T	14.20

ERC20	CLASS 2		CLASS 1		TOPAC	
	CODE / KOD	EURO	CODE / KOD	EURO	CODE / KOD	EURO
clamping dia sıkma çapı Ømm						
1/8"	ERC2003182	10.50	ERC2003181	11.80	ERC200318T	14.30
1/4"	ERC2006352	10.50	ERC2006351	11.80	ERC200635T	14.30
5/16"	ERC2007942	10.50	ERC2007941	11.80	ERC200794T	14.30
3/8"	ERC2009532	10.50	ERC2009531	11.80	ERC200953T	14.30
7/16"	ERC2011112	10.50	ERC2011111	11.80	ERC201111T	14.30
1/2"	ERC2012702	10.50	ERC2012701	11.80	ERC201270T	14.30

ERC25	CLASS 2		CLASS 1		TOPAC	
	CODE / KOD	EURO	CODE / KOD	EURO	CODE / KOD	EURO
clamping dia sıkma çapı Ømm						
1/8"	ERC2503182	11.40	ERC2503181	12.40	ERC250318T	14.90
1/4"	ERC2506352	11.40	ERC2506351	12.40	ERC250635T	14.90
5/16"	ERC2507942	11.40	ERC2507941	12.40	ERC250794T	14.90
3/8"	ERC2509532	11.40	ERC2509531	12.40	ERC250953T	14.90
7/16"	ERC2511112	11.40	ERC2511111	12.40	ERC251111T	14.90
1/2"	ERC2512702	11.40	ERC2512701	12.40	ERC251270T	14.90
9/16"	ERC2514292	11.40	ERC2514291	12.40	ERC251429T	14.90
5/8"	ERC2515882	11.40	ERC2515881	12.40	ERC251588T	14.90



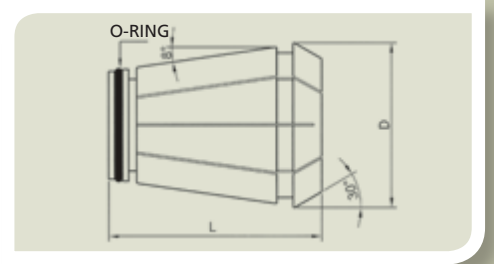
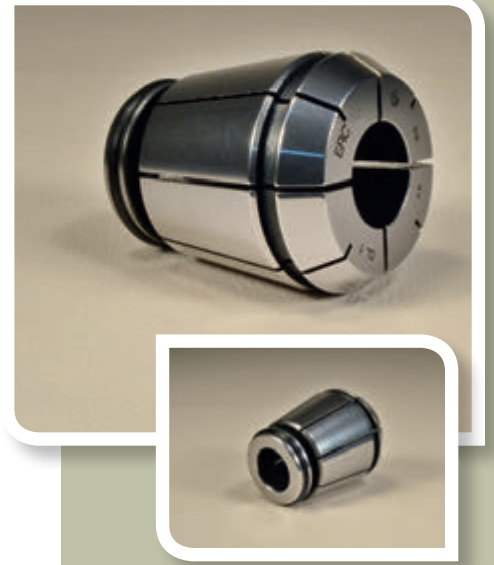
INCH SIZED COOLANT SEALED ER COLLETS for internal coolant tools
İNÇ ÖLÇÜ SIZDIRMAZ PESLER İçten soğutmalı takımlar için

DIN 6499 / ISO 15488

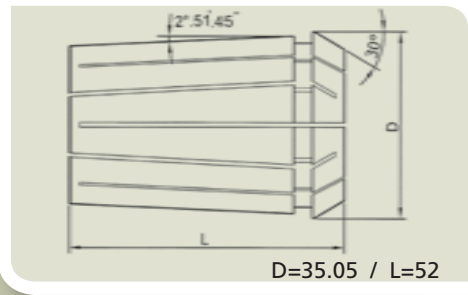
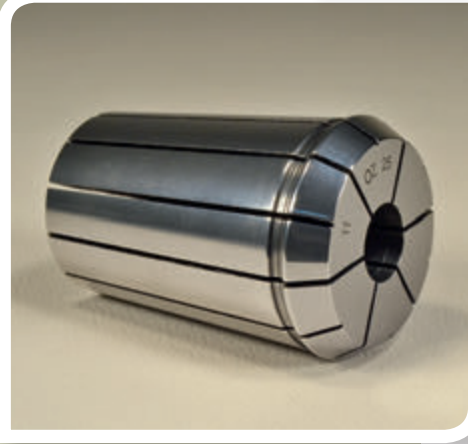
Pat. Nr. 2012 07739

ERC32	CLASS 2		CLASS 1		TOPAC	
	CODE / KOD	EURO	CODE / KOD	EURO	CODE / KOD	EURO
clamping dia sıkma çapı Ømm						
1/8"	ERC3203182	11.60	ERC3203181	13.00	ERC320318T	15.50
1/4"	ERC3206352	11.60	ERC3206351	13.00	ERC320635T	15.50
5/16"	ERC3207942	11.60	ERC3207941	13.00	ERC320794T	15.50
3/8"	ERC3209532	11.60	ERC3209531	13.00	ERC320953T	15.50
7/16"	ERC3211112	11.60	ERC3211111	13.00	ERC321111T	15.50
1/2"	ERC3212702	11.60	ERC3212701	13.00	ERC321270T	15.50
9/16"	ERC3214292	11.60	ERC3214291	13.00	ERC321429T	15.50
5/8"	ERC3215882	11.60	ERC3215881	13.00	ERC321588T	15.50
3/4"	ERC3219052	11.60	ERC3219051	13.00	ERC321905T	15.50

ERC40	CLASS 2		CLASS 1		TOPAC	
	CODE / KOD	EURO	CODE / KOD	EURO	CODE / KOD	EURO
clamping dia sıkma çapı Ømm						
1/4"	ERC4006352	13.60	ERC4006351	15.00	ERC400635T	17.50
5/16"	ERC4007942	13.60	ERC4007941	15.00	ERC400794T	17.50
3/8"	ERC4009532	13.60	ERC4009531	15.00	ERC400953T	17.50
7/16"	ERC4011112	13.60	ERC4011111	15.00	ERC401111T	17.50
1/2"	ERC4012702	13.60	ERC4012701	15.00	ERC401270T	17.50
9/16"	ERC4014292	13.60	ERC4014291	15.00	ERC401429T	17.50
5/8"	ERC4015882	13.60	ERC4015881	15.00	ERC401588T	17.50
3/4"	ERC4019052	13.60	ERC4019051	15.00	ERC401905T	17.50
1"	ERC4025402	13.60	ERC4025401	15.00	ERC402540T	17.50



DIN 6388 / ISO 10897-B COLLETS



D	52.0mm
L	60.0mm
α	2° 51' 45"
β	30°
CLAMPING RANGE TUTMA ARALIĞI	2.0-25.4
CLAMPING STEPS TUTMA KAPASİTESİ	0.5mm



OZ25 clamping dia sıkma çapı	DIN 6388 / ISO10897-B (OZ25) CLASS 2		DIN 6388 / ISO10897-B (OZ25) CLASS 1		DIN 6388 / ISO10897-B (OZ25) TOPAC (5 micron)	
	CODE / KOD	EURO	CODE / KOD	EURO	CODE / KOD	EURO
2.0-1.5	OZ250202	10.40	OZ250201	11.60	OZ25020T	13.60
2.5-2.0	OZ250252	10.40	OZ250251	11.60	OZ25025T	13.60
3.0-2.5	OZ250302	9.80	OZ250301	11.00	OZ25030T	13.00
3.5-3.0	OZ250352	9.80	OZ250351	11.00	OZ25035T	13.00
4.0-3.5	OZ250402	7.30	OZ250401	8.50	OZ25040T	10.50
4.5-4.0	OZ250452	9.20	OZ250451	10.40	OZ25045T	12.40
5.0-4.5	OZ250502	7.30	OZ250501	8.50	OZ25050T	10.50
5.5-5.0	OZ250552	9.20	OZ250551	10.40	OZ25055T	12.40
6.0-5.5	OZ250602	7.30	OZ250601	8.50	OZ25060T	10.50
1/4" (6.35)	OZ250632	9.20	OZ250631	10.40	OZ25063T	12.40
6.5-6.0	OZ250652	9.20	OZ250651	10.40	OZ25065T	12.40
7.0-6.5	OZ250702	7.30	OZ250701	8.50	OZ25070T	10.50
7.5-7.0	OZ250752	9.20	OZ250751	10.40	OZ25075T	12.40
8.0-7.5	OZ250802	7.30	OZ250801	8.50	OZ25080T	10.50
8.5-8.0	OZ250852	9.20	OZ250851	10.40	OZ25085T	12.40
9.0-8.5	OZ250902	7.30	OZ250901	8.50	OZ25090T	10.50
9.5-9.0	OZ250952	9.20	OZ250951	10.40	OZ25095T	12.40
3/8" (9.53)	OZ250962	9.20	OZ250961	10.40	OZ25096T	12.40
10.0-9.5	OZ251002	7.30	OZ251001	8.50	OZ25100T	10.50
10.5-10.0	OZ251052	9.20	OZ251051	10.40	OZ25105T	12.40
11.0-10.5	OZ251102	7.30	OZ251101	8.50	OZ25110T	10.50
11.5-11.0	OZ251152	9.20	OZ251151	10.40	OZ25115T	12.40
12.0-11.5	OZ251202	7.30	OZ251201	8.50	OZ25120T	10.50
12.5-12.0	OZ251252	9.20	OZ251251	10.40	OZ25125T	12.40
1/2" (12.70)	OZ251272	9.20	OZ251271	10.40	OZ25127T	12.40
13.0-12.5	OZ251302	7.30	OZ251301	8.50	OZ25130T	10.50
13.5-13.0	OZ251352	9.20	OZ251351	10.40	OZ25135T	12.40
14.0-13.5	OZ251402	7.30	OZ251401	8.50	OZ25140T	10.50
14.5-14.0	OZ251452	9.20	OZ251451	10.40	OZ25145T	12.40
15.0-14.5	OZ251502	7.30	OZ251501	8.50	OZ25150T	10.50
15.5-15.0	OZ251552	9.20	OZ251551	10.40	OZ25155T	12.40
5/8" (15.87)	OZ251582	9.20	OZ251581	10.40	OZ25158T	12.40
16.0-15.5	OZ251602	7.30	OZ251601	8.50	OZ25160T	10.50
16.5-16.0	OZ251652	9.20	OZ251651	10.40	OZ25165T	12.40
17.0-16.5	OZ251702	7.30	OZ251701	8.50	OZ25170T	10.50
17.5-17.0	OZ251752	9.20	OZ251751	10.40	OZ25175T	12.40
18.0-17.5	OZ251802	7.30	OZ251801	8.50	OZ25180T	10.50
18.5-18.0	OZ251852	9.20	OZ251851	10.40	OZ25185T	12.40
19.0-18.5	OZ251902	7.30	OZ251901	8.50	OZ25190T	10.50
3/4" (19.05)	OZ251912	9.20	OZ251911	10.40	OZ25191T	12.40
19.5-19.0	OZ251952	9.20	OZ251951	10.40	OZ25195T	12.40
20.0-19.5	OZ252002	7.30	OZ252001	8.50	OZ25200T	10.50
20.5-20.0	OZ252052	9.20	OZ252051	10.40	OZ25205T	12.40
21.0-20.5	OZ252102	7.30	OZ252101	8.50	OZ25210T	10.50
21.5-21.0	OZ252152	9.20	OZ252151	10.40	OZ25215T	12.40
22.0-21.5	OZ252202	7.30	OZ252201	8.50	OZ25220T	10.50
22.5-22.0	OZ252252	9.20	OZ252251	10.40	OZ25225T	12.40
23.0-22.5	OZ252302	7.30	OZ252301	8.50	OZ25230T	10.50
23.5-23.0	OZ252352	9.20	OZ252351	10.40	OZ25235T	12.40
24.0-23.5	OZ252402	7.30	OZ252401	8.50	OZ25240T	10.50
24.5-24.0	OZ252452	9.20	OZ252451	10.40	OZ25245T	12.40
25.0-24.5	OZ252502	7.30	OZ252501	8.50	OZ25250T	10.50
1" (25.40)	OZ252542	9.20	OZ252541	10.40	OZ25254T	12.40

DIN6388B-25 COLLET SETS / DIN6388B-25 PENS TAKIMLARI

OZ25 COLLET SET CLASS 2

CODE/KOD	content - içeriği	EURO
OZ25SET2	24pcs DIN6388B-25 collets Class2 Ø2-25mm in 1mm increments in plastic box 24 Ad. DIN6388-25 Pens Class2 Ø2-25mm 1mm atlamalı plastik kutuda	195.00

OZ25 COLLET SET CLASS 1

CODE/KOD	content - içeriği	EURO
OZ25SET1	24pcs DIN6388B-25 collets Class1 Ø2-25mm in 1mm increments in plastic box 24 Ad. DIN6388-25 Pens Class1 Ø2-25mm 1mm atlamalı plastik kutuda	224.00

OZ25 COLLET SET TOPAC (5 micron)

CODE/KOD	content - içeriği	EURO
OZ25SETT	24pcs DIN6388B-25 collets TOPAC Ø2-25mm in 1mm increments in plastic box 24 Ad. DIN6388-25 Pens TOPAC Ø2-25mm 1mm atlamalı plastik kutuda	272.00

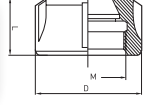


TOOLHOLDER ACCESSORIES
TUTUCU AKSESUARLARI

LOCKNUTS PENS SOMUNLARI



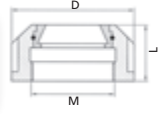
ER STANDARD LOCKNUT / ER STANDART SOMUN DIN 6499 / ISO 15488



CODE KOD	ER SIZE ER ÖLÇÜSÜ	D	L	M	EURO
NER16S	ER 16	32	17.5	M 22 x 1.5	5.20
NER20S	ER 20	35	19	M 25 x 1.5	5.20
NER25S	ER 25	42	20	M 32 x 1.5	5.50
NER32S	ER 32	50	22.5	M 40 x 1.5	5.70
NER40S	ER 40	63	25.5	M 50 x 1.5	7.50
NER50S	ER 50	78	35	M 64 x 2	13.00



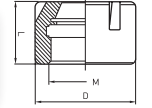
ER BEARING TYPE LOCKNUT / ER BİLYALI TİP SOMUN DIN 6499 / ISO 15488



CODE KOD	ER SIZE ER ÖLÇÜSÜ	D	L	M	EURO
NER25B	ER 25	42	23	M 32 x 1.5	14.00
NER32B	ER 32	50	25	M 40 x 1.5	14.00
NER40B	ER 40	63	28.5	M 50 x 1.5	15.00



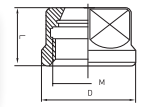
ER MINI LOCKNUT / ER MİNİ SOMUN DIN 6499 / ISO 15488



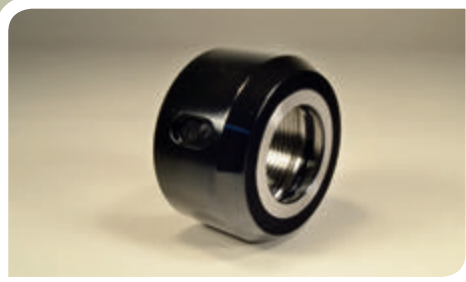
CODE KOD	ER SIZE ER ÖLÇÜSÜ	D	L	M	EURO
NER08M	ER 8 MINI	12	11	M 10 x 0.75	5.80
NER11M	ER 11 MINI	16	12	M 13 x 0.75	5.20
NER16M	ER 16 MINI	22	19	M 19 x 1	5.20
NER20M	ER 20 MINI	28	19	M 24 x 1	5.30
NER25M	ER 25 MINI	35	20	M 30 x 1	5.60



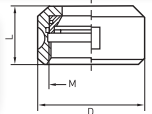
ER HEXAGON LOCKNUT / ER ALTİKÖŞE SOMUN DIN 6499 / ISO 15488



CODE KOD	ER SIZE ER ÖLÇÜSÜ	D	L	M	EURO
NER11H	ER 11	19	11.3	M 14 x 0.75	5.20
NER16H	ER 16	28	17	M 22 x 1.5	5.20
NER20H	ER 20	34	19	M 25 x 1.5	5.30



OZ TYPE LOCKNUT / OZ TİP SOMUN DIN 6388 / ISO 10897-D



CODE KOD	D	L	M	EURO
NOZ25B	60	33	M 48 x 2	16.00

SPANNERS ANAHTARLAR

ER STANDARD SPANNER / ER STANDART ANAHTAR

CODE / KOD	ER SIZE / ER ÖLÇÜSÜ	EURO
SPER16S	ER 16	4.25
SPER20S	ER 20	4.30
SPER25S	ER 25	4.60
SPER32S	ER 32	5.00
SPER40S	ER 40	6.30
SPER50S	ER 50	12.00



ER MOON TYPE SPANNER / ER AY TİPİ ANAHTAR

CODE / KOD	ER SIZE / ER ÖLÇÜSÜ	EURO
SPER25C	ER 25	4.60
SPER32C	ER 32	5.00
SPER40C	ER 40	6.30



ER MINI SPANNER / ER MINI ANAHTAR

CODE / KOD	ER SIZE / ER ÖLÇÜSÜ	EURO
SPER08M	ER 8 MINI	5.40
SPER11M	ER 11 MINI	5.40
SPER16M	ER 16 MINI	5.40
SPER20M	ER 20 MINI	6.20
SPER25M	ER 25 MINI	6.70



ER HEXAGON SPANNER / ER ALTIKÖŞE ANAHTAR

CODE / KOD	ER SIZE / ER ÖLÇÜSÜ	EURO
SPER11H	ER 11	3.60
SPER16H	ER 16	3.80
SPER20H	ER 20	4.00



OZ SPANNER DIN 6388 / ISO 10897 - OZ AY ANAHTAR DIN 6388 / ISO 10897

CODE / KOD	LOCKNUT TYPE SOMUN TİPİ	EURO
SPOZ25	DIN6388B-25 (OZ25)	5.00



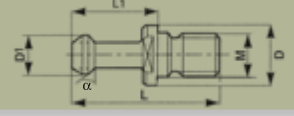
FACE MILL SPANNER / ALIN FREZE TUTUCU ANAHTARI

CODE / KOD	TYPE / TİP	EURO
SPFM16	FM16	10.00
SPFM22	FM22	11.00
SPFM27	FM27	12.50
SPFM32	FM32	14.80
SPFM40	FM40	21.00



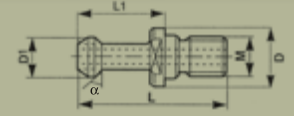
PULL STUDS ÇEKTİRME CİVATALARI

MAS 403 BT



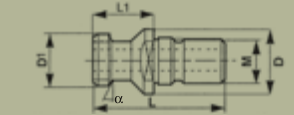
CODE KOD	Toolholder Taper Tutucu Konik	M	D	D1	L	L1	α	EURO
PSBT3045	BT30	M12	16.5	11	43	23	45°	4.00
PSBT4045	BT40	M16	23	15	60	35	45°	3.60
PSBT4060	BT40	M16	23	15	60	35	60°	3.60
PSBT4090	BT40	M16	23	15	60	35	90°	3.60
PSBT5045	BT50	M24	38	23	85	45	45°	5.50

MAS 403 BT - internal coolant İçten soğutma delikli



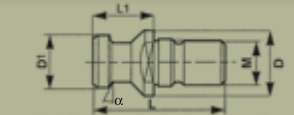
CODE KOD	Toolholder Taper Tutucu Konik	M	D	D1	L	L1	α	EURO
PSBT4045B	BT40	M16	23	15	60	35	45°	3.90
PSBT5045B	BT50	M24	38	23	85	45	45°	5.90

DIN 69872A - internal coolant İçten soğutma delikli



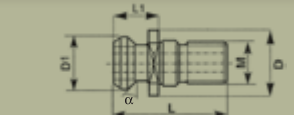
CODE KOD	Toolholder Taper Tutucu Konik	M	D	D1	L	L1	α	EURO
PS698724A	DIN40 (69871)	M16	23	19	54	26	15°	3.90
PS698725A	DIN50 (69871)	M24	36	28	74	34	15°	5.90

DIN 69872B



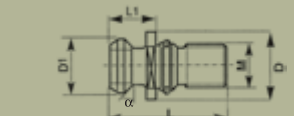
CODE KOD	Toolholder Taper Tutucu Konik	M	D	D1	L	L1	α	EURO
PS698724B	DIN40 (69871)	M16	23	19	54	26	15°	3.60
PS698725B	DIN50 (69871)	M24	36	28	74	34	15°	5.50

ISO 7388/2 (1984/B) - internal coolant İçten soğutma delikli



CODE KOD	Toolholder Taper Tutucu Konik	M	D	D1	L	L1	α	EURO
PS738840A	DIN40 (69871)	M16	22.5	18.9	44.5	16.3	45°	3.90
PS738850A	DIN50 (69871)	M24	36	29.1	65.5	25.6	45°	5.90

ISO 7388/2 (1984/B)

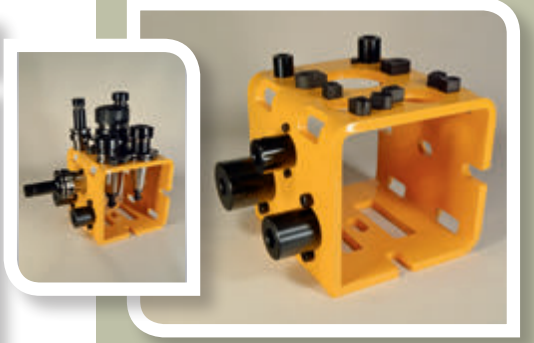


CODE KOD	Toolholder Taper Tutucu Konik	M	D	D1	L	L1	α	EURO
PS738840B	DIN40 (69871)	M16	22.5	18.9	44.5	16.3	45°	3.60
PS738850B	DIN50 (69871)	M24	36	29.1	65.5	25.6	45°	5.50

TOOL CLAMPING UNITS TAKIM BAĞLAMA ÜNİTELERİ

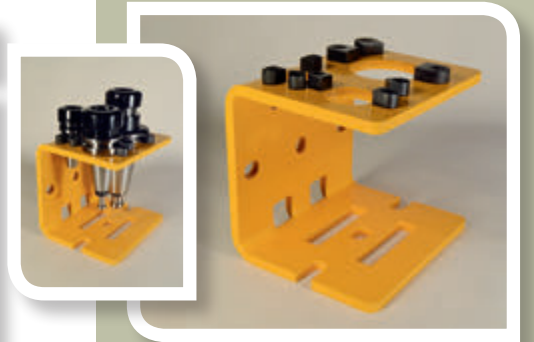
UNIVERSAL TOOL CLAMPING SET / ÜNİVERSAL TAKIM BAĞLAMA SETİ Pat.

CODE / KOD	Description / Tanımı	EURO
TBAUNI	<p>All in one, Universal design massive steel construction, usable both vertical and horizontal position, suitable tapers: BT-DIN-ISO-SK-CAT 30-40-50 HSK A 40-50-63-80-100</p> <p>Hepsi bir arada, üniversal tasarım, masif çelik yapı, dikey ve yatay kullanım ve bağlama imkanı takılan konikler BT-DIN-ISO-SK-CAT 30-40-50 HSK A 40-50-63-80-100</p> <p>Dimensions/Boyutlar: 174x191x169mm</p>	268.00



TOOL CLAMPING UNIT 30-40-50 TAPER / TAKIM BAĞLAMA APARATI 30-40-50 KONİK

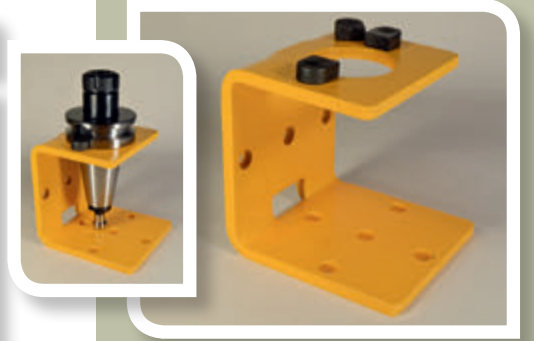
CODE / KOD	Description / Tanımı	EURO
TBA304050	<p>Massive steel construction, usable both vertical and horizontal position, suitable for tapers BT-DIN-ISO-SK-CAT 30-40-50</p> <p>Masif çelik yapı, dikey ve yatay konumda bağlama imkanı, Bağladığı konikler: BT-DIN-ISO-SK-CAT 30-40-50</p> <p>Dimensions/Boyutlar: 165x190x165mm</p>	86.00



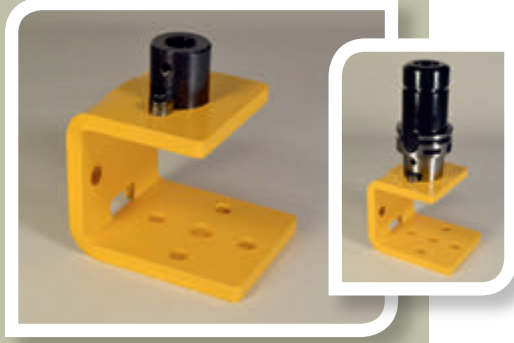
TOOL CLAMPING UNIT WITH SINGLE TAPER / TAKIM BAĞLAMA APARATI TEK KONİKLİ

CODE / KOD	Description / Tanımı	EURO
TBA30	<p>Tool clamping unit 30 Taper Takım bağlama aparatı 30 konik BT-DIN-ISO-SK-CAT 30 Dimensions/Boyutlar: 75x95x75mm</p>	47.00
TBA40	<p>Tool clamping unit 40 Taper Takım bağlama aparatı 40 konik BT-DIN-ISO-SK-CAT 40 Dimensions/Boyutlar: 90x110x105mm</p>	55.00
TBA50	<p>Tool clamping unit 50 Taper Takım bağlama aparatı 50 konik BT-DIN-ISO-SK-CAT 50 Dimensions/Boyutlar: 110x148x150mm</p>	65.00

Massive steel construction, usable both vertical and horizontal position,
Masif çelik yapı, dikey ve yatay bağlama imkanı



TOOL CLAMPING UNITS TAKIM BAĞLAMA ÜNİTELERİ



TOOL CLAMPING UNIT FOR HSK-A TAPERS / TAKIM BAĞLAMA APARATI HSK-A KONİKLER İÇİN

CODE / KOD	Description / Tanımı	EURO
TBAHSK40	Tool clamping unit HSK-A 40 Taper Takım bağlama aparatı HSK-A 40 konik Dimensions/Boyutlar: 60x80x60mm	70.00
TBAHSK50	Tool clamping unit HSK-A 50 Taper Takım bağlama aparatı HSK-A 50 konik Dimensions/Boyutlar: 75x90x65mm	76.00
TBAHSK63	Tool clamping unit HSK-A 63 Taper Takım bağlama aparatı HSK-A 63 konik Dimensions/Boyutlar: 85x100x70mm	85.00
TBAHSK80	Tool clamping unit HSK-A 80 Taper Takım bağlama aparatı HSK-A 80 konik Dimensions/Boyutlar: 100x120x70mm	95.00
TBAHSK100	Tool clamping unit HSK-A 100 Taper Takım bağlama aparatı HSK-A 100 konik Dimensions/Boyutlar: 120x130x70mm	110.00

Massive steel construction, usable both vertical and horizontal position,
Masif çelik yapı, dikey ve yatay bağlama imkanı



MULTI PURPOSE MITER FIXTURE / ÇOK AMAÇLI GÖNYE APARATI

CODE / KOD	Description / Tanımı	EURO
MITFIX	Massive steel construction, usable both vertical and horizontal position, fixing and workpiece or fixture, suitable for our tool clamping set / unit Dimensions: WidthxLengthxHeight 100x190x140mm Masif çelik yapı, dikey ve yatay konumda kullanım ve her tür iş parçası ve aparat bağlamaya uygun, ayrıca takım bağlama aparat ve setlerimize de uygundur Boyutlar: EnxBoyxYükseklik 100x190x140mm	22.00



TOOLHOLDER STORAGE STAND / TAKIM TUTUCU STANDI

CODE / KOD	Description / Tanımı	EURO
TSUNI16	Toolholder storage stand 16 holes Universal design suits all tapers BT-DIN-ISO-SK-CAT 30-40-50 HSK A 32-40-50-63-80 Dimensions: WidthxLengthxHeight 57x50x30mm Takım tutucu standı 16 hazneli Universal tasarım tüm koniklere uygun BT-DIN-ISO-SK-CAT 30-40-50 HSK A 32-40-50-63-80 Boyutlar: EnxBoyxYükseklik 57x50x30mm	70.00

WOODEN COLLET STANDS AHŞAP PENS STANTLARI

WOODEN COLLET STAND / AHŞAP PENS STANDI

CODE / KOD	Collet to fit / Uygun pens tipi	EURO
WCS08	ER 8	5.00
WCS11	ER 11	5.00
WCS16	ER 16	5.00
WCS20	ER 20	5.00
WCS25	ER 25	6.50
WCS32	ER 32	8.00
WCS40	ER 40	11.50
WCS50	ER 50	11.50
WCSOZ	OZ25 DIN6388-25	11.50



SPARE TOOLHOLDER SCREWS YEDEK TAKIM TUTUCU CİVATALARI

FACE MILL ADAPTOR LOCK SCREW / ALIN FREZE TUTUCU SABİTLEME CİVATASI

CODE / KOD	TOOLHOLDER REF. / TUTUCU REF.	SIZE / ÖLÇÜ	EURO
SCFM16	FACE MILL Ø16MM	M8	3.10
SCFM22	FACE MILL Ø22MM	M10	3.80
SCFM27	FACE MILL Ø27MM	M12	4.10
SCFM32	FACE MILL Ø32MM	M16	5.20
SCFM40	FACE MILL Ø40MM	M20	7.00

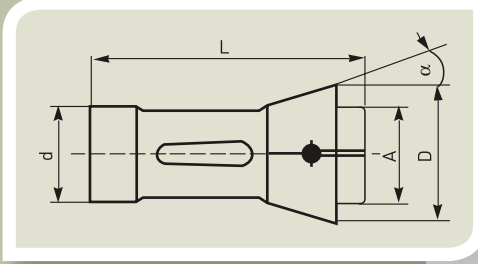


WELDON ADAPTOR SIDE LOCK SCREW / WELDON TUTUCU SABİTLEME CİVATASI

CODE / KOD	TOOLHOLDER REF. / TUTUCU REF.	SIZE / ÖLÇÜ	EURO
SCW06	WELDON Ø6MM	M6X10	1.20
SCW08	WELDON Ø8MM	M8X10	1.20
SCW10	WELDON Ø10MM	M10X12	1.75
SCW12	WELDON Ø12MM	M12X16	1.75
SCW14	WELDON Ø14MM	M12X16	1.75
SCW16	WELDON Ø16MM	M14X16	1.85
SCW18	WELDON Ø18MM	M14X16	1.85
SCW20	WELDON Ø20MM	M16X16	2.00
SCW25	WELDON Ø25MM	M18X2X20	3.30
SCW32	WELDON Ø32MM	M20X2X20	3.50
SCW40	WELDON Ø40MM	M20X2X20	3.50



DIN 6343 WORKHOLDING COLLETS DIN 6343 CNC TORNA, OTOMAT, REVOLVER PENSLERİ



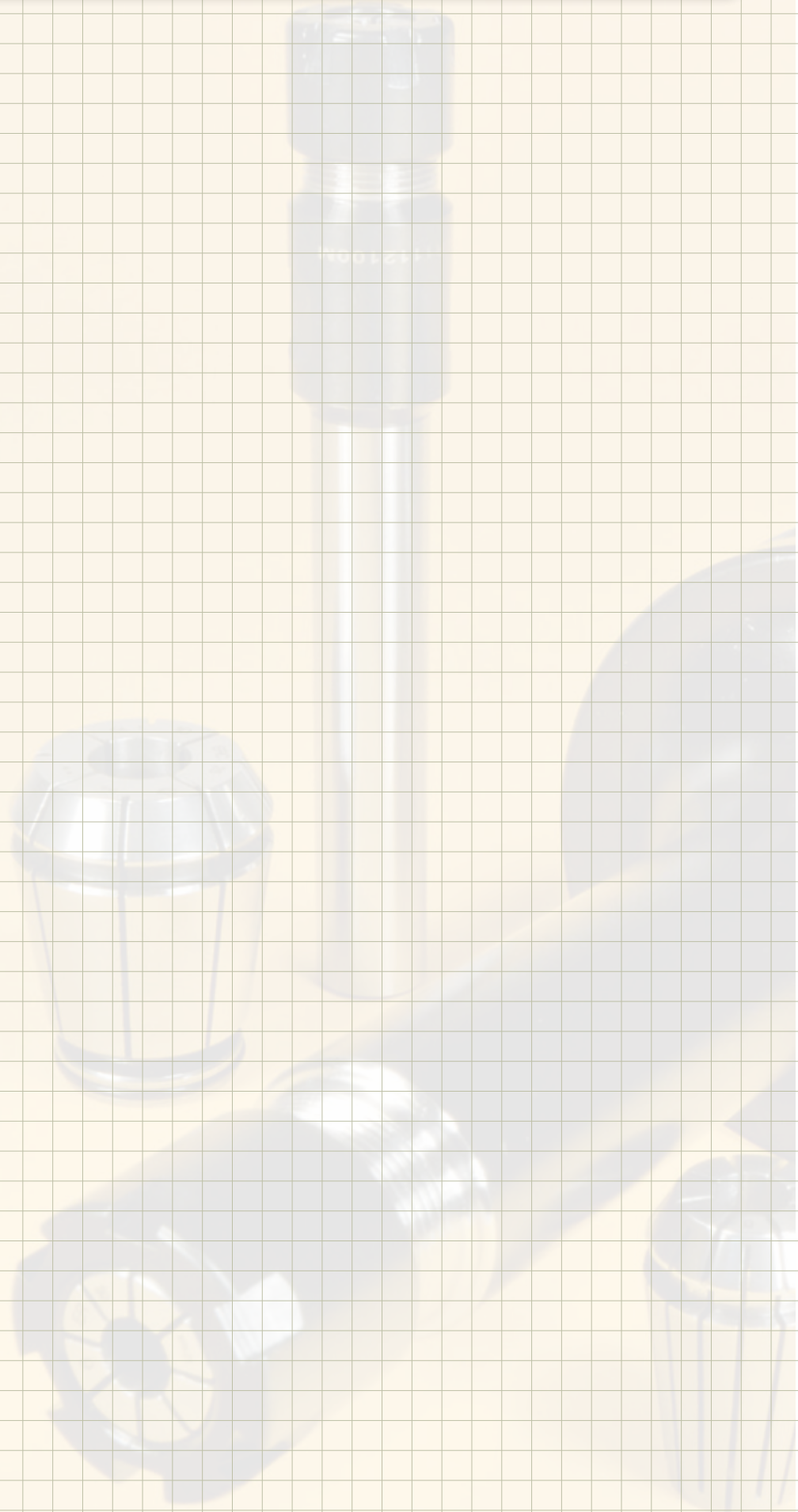
CODE KOD	TYPE TİP	d	L	D	A	α	ROUND YUVARLAK	HEXAGON ALTİKÖŞE	SQUARE KARE
							●	⬡	■
							EURO	EURO	EURO
FC140E....	A16 140E F22 TRAUB A15 INDEX 12	22	55	30	21	15°	10.50 (Ø3-16mm)	17.50 (Ø5-13mm)	19.00 (Ø5-10mm)
FC148E....	A20 148E F28 TRAUB A20 INDEX 18	28	70	38	28	15°	12.50 (Ø3-22mm)	19.00 (Ø5-19mm)	21.00 (Ø5-15mm)
FC161E....	A25 161E F32 TRAUB A25 INDEX 20	32	75	45	34	15°	13.00 (Ø3-26mm)	20.00 (Ø5-22mm)	22.00 (Ø5-18mm)
FC162E....	A25-1 162E F35 INDEX 25	35	70	43	34	15°	14.50 (Ø3-25mm)	21.00 (Ø5-22mm)	23.00 (Ø5-18mm)
FC163E....	A30 163E F35 TRAUB A30 INDEX 24	35	80	48	38	15°	14.00 (Ø3-30mm)	20.00 (Ø5-26mm)	22.00 (Ø5-20mm)
FC171E....	A36 171E F42 TRAUB A36 INDEX 30	42	94	55	42	15°	19.00 (Ø3-36mm)	31.00 (Ø5-30mm)	33.00 (Ø5-25mm)
FC173E....	A42 173E F48 TRAUB A42 INDEX 36	48	94	60	50	15°	19.00 (Ø3-42mm)	31.00 (Ø5-36mm)	33.00 (Ø5-29mm)
FC185E....	A60 185E F66 TRAUB A60 INDEX 52	66	110	84	73	15°	38.00 (Ø4-60mm)	60.00 (Ø10-52mm)	62.00 (Ø7-42mm)

Ordering examples : FC173E100R - 173E collet 10mm Round
Suffix of the code R= Round H=Hexagon S=Square
Special sizes made to order

Sipariş kodu örnek : FC173E100R - 173E pens 10mm Yuvarlak
Kod sonundaki R=Yuvarlak H=Altıköşe S=Kare
Özel ölçüler siparişe üretilir.



NOTES





gürkan makina ticaret ve sanayi ltd.şti.

Metal-İş Sanayi Sitesi 9. Blok No: 18
34306 İkitelli - İstanbul - TURKEY

Phone: +90 212 549 3424

Fax: +90 212 549 6798

International Sales Fax:+90 212 549 6796

e-mail: gurkan@gurkan.com

www.gurkan.com